

 **BOEING**
COMPONENT
MAINTENANCE MANUAL

TO: ALL HOLDERS OF UNDERWING FAIRING ECS DOOR ASSEMBLY COMPONENT MAINTENANCE
MANUAL 52-48-51

REVISION NO. 9 DATED MAR 01/00

HIGHLIGHTS

Pages which have been added or revised are outlined below together with the highlights of the revision. Remove and insert the affected pages as listed and enter Revision No. and date to the Record of Revision Sheet.

CHAPTER/SECTION

AND PAGE NO.

DESCRIPTION OF CHANGE

TITLE PAGE

Added top assemblies 149T7210-69 and -70.

1

TR & SB RECORD

1

501

REPAIR 1-1

601

REPAIR 2-1

601-602

REPAIR 3-1

601-605

701-705

802

1002-1036,1038-1044

52-48-51

HIGHLIGHTS

01.1

Page 1

Mar 01/00

UNDERWING FAIRING ECS DOOR ASSEMBLY

PART NUMBERS 149T7210-1,-2,-63,-64,-69,-70

COMPONENT MAINTENANCE MANUAL
WITH
ILLUSTRATED PARTS LIST

52-48-51

TITLE PAGE

Page 1

Mar 01/00

01.1



REVISION RECORD

- Retain this record in front of manual. On receipt of revision, insert revised pages in the manual, and enter revision number, date inserted and initial.

REVISION NUMBER	REVISION DATE	DATE FILED	BY	REVISION NUMBER	REVISION DATE	DATE FILED	BY

52-48-51

REVISION RECORD

01.1

Page 1

Oct 10/83



TEMPORARY REVISION AND SERVICE BULLETIN RECORD

BOEING SERVICE BULLETIN	BOEING TEMPORARY REVISION	OTHER DIRECTIVE	DATE OF INCORPORATION INTO MANUAL
		PRRC 10001 PRRB 10700 PRRB 11382-3 PRRB 13100-1 PRRB 12106-1 PRRB 13115-1	JAN 10/82 OCT 10/84 OCT 01/87 APR 01/89 APR 01/89 MAR 01/00

52-48-51

TR & SB RECORD

01.1

Page 1

Mar 01/00


BOEING
 COMPONENT
 MAINTENANCE MANUAL

PAGE	DATE	CODE	PAGE	DATE	CODE
52-48-51					
TITLE PAGE			REPAIR-GENERAL		
*1	MAR 01/00	01.1	601	OCT 10/83	01.1
2	BLANK		602	DEC 01/95	01.1
			603	DEC 01/95	01.1
REVISION RECORD			604	BLANK	
1	OCT 10/83	01.1	REPAIR 1-1		
2	BLANK		*601	MAR 01/00	01.1
TR & SB RECORD			602	BLANK	
*1	MAR 01/00	01.1	REPAIR 2-1		
2	BLANK		*601	MAR 01/00	01.1
LIST OF EFFECTIVE PAGES			*602	MAR 01/00	01.1
*1	MAR 01/00	01	*603	MAR 01/00	01.1
THRU LAST PAGE			*604	MAR 01/00	01.1
CONTENTS			*605	MAR 01/00	01.1
1	OCT 10/84	01.1	*606	BLANK	
2	BLANK		ASSEMBLY		
INTRODUCTION			*701	MAR 01/00	01.1
1	OCT 01/90	01.1	*702	MAR 01/00	01.1
2	BLANK		*703	MAR 01/00	01.1
DESCRIPTION & OPERATION			*704	MAR 01/00	01.1
1	OCT 10/84	01.1	*705	MAR 01/00	01.1
2	BLANK		*706	BLANK	
DISASSEMBLY			FITS AND CLEARANCES		
301	OCT 10/83	01.1	801	OCT 01/90	01.1
302	BLANK		*802	MAR 01/00	01.1
CLEANING			ILLUSTRATED PARTS LIST		
401	OCT 10/84	01.1	1001	OCT 10/83	01.1
402	BLANK		*1002	MAR 01/00	01.1
CHECK			*1003	MAR 01/00	01.1
*501	MAR 01/00	01.1	*1004	MAR 01/00	01.1
502	BLANK		*1005	MAR 01/00	01.1
			*1006	MAR 01/00	01.1
			*1007	MAR 01/00	01.1
			*1008	MAR 01/00	01.1

* = REVISED, ADDED OR DELETED

52-48-51

EFFECTIVE PAGES

CONTINUED Page 1

01 Mar 01/00

PAGE	DATE	CODE	PAGE	DATE	CODE
ILLUSTRATED PARTS LIST		CONT.			
*1009	MAR 01/00	01.1			
*1010	MAR 01/00	01.1			
*1011	MAR 01/00	01.1			
*1012	MAR 01/00	01.1			
*1013	MAR 01/00	01.1			
*1014	MAR 01/00	01.1			
*1015	MAR 01/00	01.1			
*1016	MAR 01/00	01.1			
*1017	MAR 01/00	01.1			
*1018	MAR 01/00	01.1			
*1019	MAR 01/00	01.1			
*1020	MAR 01/00	01.1			
*1021	MAR 01/00	01.1			
*1022	MAR 01/00	01.1			
*1023	MAR 01/00	01.1			
*1024	MAR 01/00	01.1			
*1025	MAR 01/00	01.1			
*1026	MAR 01/00	01.1			
*1027	MAR 01/00	01.1			
*1028	MAR 01/00	01.1			
*1029	MAR 01/00	01.1			
*1030	MAR 01/00	01.1			
*1031	MAR 01/00	01.1			
*1032	MAR 01/00	01.1			
*1033	MAR 01/00	01.1			
*1034	MAR 01/00	01.1			
*1035	MAR 01/00	01.1			
*1036	MAR 01/00	01.1			
*1037	BLANK				
*1038	MAR 01/00	01.1			
*1039	MAR 01/00	01.1			
*1040	MAR 01/00	01.1			
*1041	MAR 01/00	01.1			
*1042	MAR 01/00	01.1			
*1043	MAR 01/00	01.1			
*1044	MAR 01/00	01.1			

* = REVISED, ADDED OR DELETED

52-48-51

EFFECTIVE PAGES
 LAST PAGE Page 2
 01 Mar 01/00



TABLE OF CONTENTS

<u>Paragraph Title</u>	<u>Page</u>
Description and Operation.	1
Testing/Trouble Shooting (not applicable)	
Disassembly.	301
Cleaning	401
Check.	501
Repair	601
Assembly	701
Fits and Clearances.	801
Special Tools (not applicable)	
Illustrated Parts List	1001

52-48-51

CONTENTS

Page 1

Oct 10/84

01.1



INTRODUCTION

The instructions in this manual provide the information necessary to perform maintenance functions ranging from simple checks and replacement to complete shop-type repair.

This manual is divided into separate sections:

- | | |
|--|------------------------------|
| 1. Title Page | 4. List of Effective Pages |
| 2. Record of Revisions | 5. Table of Contents |
| 3. Temporary Revision &
Service Bulletin Record | 6. Introduction |
| | 7. Procedures & IPL Sections |

Refer to the Table of Contents for the page location of applicable sections. An asterisked flagnote *[] in place of the page number indicates that no special instructions are provided since the function can be performed using standard industry practices.

The beginning of the REPAIR section includes a list of the separate repairs, a list of applicable standard Boeing practices, and an explanation of the True Position Dimensioning symbols used.

An explanation of the use of the Illustrated Parts List is provided in the Introduction to that section.

All weights and measurements used in the manual are in English units, unless otherwise stated. When metric equivalents are given they will be in parentheses following the English units.

Design changes, optional parts, configuration differences and Service Bulletin modifications create alternate part numbers. These are identified in the Illustrated Parts List (IPL) by adding an alphabetical character to the basic item number. The resulting item number is called an alpha-variant. Throughout the manual, IPL basic item number references also apply to alpha-variants unless otherwise indicated.

Verification:

| Assembly: May 08/82

52-48-51

INTRODUCTION

01.1

Page 1

Oct 01/90



UNDERWING FAIRING ECS DOOR ASSEMBLY

DESCRIPTION AND OPERATION

1. Description and Operation

- A. The ECS door assemblies are located just forward of the main landing gear wheel well doors. Their purpose is to provide access for repair or replacement of the two air conditioning packs on the airplane. Each assembly consists of a honeycomb structure hinged on the inboard edge and latched on all other edges. The left hand door contains four hinges and thirteen latches, while the right hand door contains five hinges and twelve latches. Also contained on each door is a rod assembly. This rod assembly is used to hold the door stationary during servicing of the air conditioning packs.

2. Leading Particulars (approximate)

Length -- 112 inches
Width -- 51 inches
Weight -- 58 pounds (each)

52-48-51

DESCRIPTION & OPERATION

01.1

Page 1

Oct 10/84



DISASSEMBLY

1. Disassemble this component only as necessary to complete fault isolation, determine the serviceability of parts, perform required repairs and restore the unit to serviceable condition.

52-48-51

DISASSEMBLY

01.1

Page 301

Oct 10/83



CLEANING

1. Clean all parts using standard industry practices and information contained in 20-30-03.

CAUTION: DO NOT USE CHLORIDE CLEANING SOLUTIONS ON GRAPHITE/EPOXY HONEYCOMB SANDWICH MATERIALS. USE OF CHLORIDE CLEANING SOLUTIONS SUCH AS METHYLENE CHLORIDE, TRICHLOROETHYLENE AND TRICHLOROETHYLANE HAVE BEEN FOUND TO BE HARMFUL TO THE EPOXY RESIN IN GRAPHITE/EPOXY HONEYCOMB SANDWICH MATERIALS.

1,1,1 - TRICHLOROETHANE IS ONE OF THE SOLVENTS ALLOWED FOR CLEANING COMPOSITE COMPONENTS. DO NOT SUBMERGE PARTS IN THE SOLVENT OR ALLOW STANDING SOLVENT ON THE PARTS OR DAMAGE MAY OCCUR. USE 1,1,1 - TRICHLOROETHANE ONLY AS A WIPE SOLVENT.

2. Clean bonded assemblies using only non-chlorinated cleaners.

52-48-51

CLEANING
Page 401
Oct 10/84

01.1

CHECK

1. Use standard industry practices to do a visual check for damage on all visible parts. Do the magnetic particle check or penetrant check if the visual check shows possible damage on the parts that follow:
 - A. Magnetic particle check as specified in 20-20-01 -- End (615, IPL Fig. 1) and catch (685, IPL Fig. 1).
 - B. Penetrant check as specified in 20-20-02 -- Hinges (105, 110, 115, 120, IPL Fig. 1; 35, 40, 45, IPL Fig. 3; 33, 35, 40, IPL Fig. 4), fittings (555, 560, 655, 660, IPL Fig. 1; 450, IPL Fig. 3; 230, IPL Fig. 4) and tubes (630, 635, IPL Fig. 1).
2. Check honeycomb and bonded parts for evidence of delamination, internal water, scratches, and contour defects.
 - A. Examine for delamination ultrasonically.
 - B. Examine areas suspected of containing water radiographically or thermographically to determine extent of damage.
 - C. Examine edges of panel carefully for cuts and abrasions. Delamination starts very easily from damage to an edge member of honeycomb panel.
3. Refer to 767 Structural Repair Manual, 53-50-70, for allowable damage data.

52-48-51

CHECK

01.1

Page 501

Mar 01/00

REPAIR – GENERAL1. Content

- A. Repair, refinish and replacement procedures are included in separate repair sections as follows:

<u>P/N</u>	<u>NAME</u>	<u>REPAIR</u>
149T7212	HINGE ASSY	1-1
149T7217	FITTING ASSY	2-1
- -	MISCELLANEOUS PARTS	3-1

2. Standard Practices

- A. Refer to the following standard practices, as applicable, for details of procedures in individual repairs.

20-30-02 Stripping of Protective Finishes
 20-30-03 General Cleaning Procedures
 20-41-01 Decoding Table for Boeing Finish Codes
 20-41-02 Application of Chemical and Solvent Resistant Finishes
 20-42-05 Bright Cadmium Plating
 20-43-01 Chromic Acid Anodizing
 20-44-01 Application of Abrasion Resistant Finishes
 20-50-03 Bearing Installation and Retention

3. Materials

NOTE: Equivalent substitutes may be used.

- A. Coating, Conductive -- BMS 10-21, type 1 (Ref 20-60-04)
 B. Coating, Teflon filled -- BMS 10-86, type 1, white (Ref 20-60-04)
 C. Conditioner, Static -- Dexter 28-C-1 (Ref 20-60-04)
 D. Enamel -- BMS 10-11, type 2, BAC702 white gloss (Ref 20-60-02)
 E. Primer -- BMS 10-11, type 1 (Ref 20-60-02)
 F. Primer -- BMS 10-79, type 2 (Ref 20-60-02)
 G. Surfacer -- Dexter 8-W-5 (Ref 20-60-04)

52-48-51

REPAIR-GENERAL

01.1

Page 601

Oct 10/83

4. Dimensioning Symbols

- A. Standard True Position Dimensioning Symbols used in applicable repair procedures are shown in Fig. 601.

52-48-51

REPAIR-GENERAL

01.1

Page 602

Dec 01/95

BOEING

COMPONENT MAINTENANCE MANUAL

- STRAIGHTNESS
- ▭ FLATNESS
- ⊥ PERPENDICULARITY (OR SQUARENESS)
- // PARALLELISM
- ROUNDNESS
- ⊘ CYLINDRICITY
- ⌒ PROFILE OF A LINE
- ⌒ PROFILE OF A SURFACE
- ◎ CONCENTRICITY
- ≡ SYMMETRY
- ∠ ANGULARITY
- ↗ RUNOUT
- ↗ TOTAL RUNOUT
- ⊓ COUNTERBORE OR SPOTFACE
- ∇ COUNTERSINK

- ⊕ THEORETICAL EXACT POSITION OF A FEATURE (TRUE POSITION)
- ∅ DIAMETER
- S ∅ SPHERICAL DIAMETER
- R RADIUS
- SR SPHERICAL RADIUS
- () REFERENCE
- BASIC (BSC) OR DIM A THEORETICALLY EXACT DIMENSION USED TO DESCRIBE SIZE, SHAPE OR LOCATION OF A FEATURE FROM WHICH PERMISSIBLE VARIATIONS ARE ESTABLISHED BY TOLERANCES ON OTHER DIMENSIONS OR NOTES.
- A- DATUM
- Ⓜ MAXIMUM MATERIAL CONDITION (MMC)
- Ⓛ LEAST MATERIAL CONDITION (LMC)
- Ⓢ REGARDLESS OF FEATURE SIZE (RFS)
- Ⓟ PROJECTED TOLERANCE ZONE
- FIM FULL INDICATOR MOVEMENT

EXAMPLES

<p>— 0.002 STRAIGHT WITHIN 0.002</p> <p>⊥ 0.002 B PERPENDICULAR TO B WITHIN 0.002</p> <p>// 0.002 A PARALLEL TO A WITHIN 0.002</p> <p>○ 0.002 ROUND WITHIN 0.002</p> <p>⊘ 0.010 CYLINDRICAL SURFACE MUST LIE BETWEEN TWO CONCENTRIC CYLINDERS, ONE OF WHICH HAS A RADIUS 0.010 INCH GREATER THAN THE OTHER</p> <p>⌒ 0.006 A EACH LINE ELEMENT OF THE SURFACE AT ANY CROSS SECTION MUST LIE BETWEEN TWO PROFILE BOUNDARIES 0.006 INCH APART RELATIVE TO DATUM PLANE A</p> <p>▭ 0.020 A SURFACES MUST LIE WITHIN PARALLEL BOUNDARIES 0.02 INCH APART AND EQUALLY DISPOSED ABOUT TRUE PROFILE</p>	<p>◎ ∅ 0.0005 C CONCENTRIC TO C WITHIN 0.0005 DIAMETER</p> <p>≡ 0.010 A SYMMETRICAL WITH A WITHIN 0.010</p> <p>∠ 0.005 A ANGULAR TOLERANCE 0.005 WITH A</p> <p>⊕ ∅ 0.002 Ⓢ B LOCATED AT TRUE POSITION WITHIN 0.002 DIA RELATIVE TO DATUM B, REGARDLESS OF FEATURE SIZE</p> <p>⊥ ∅ 0.010 Ⓜ A 0.510 Ⓟ AXIS IS TOTALLY WITHIN A CYLINDER OF 0.010-INCH DIAMETER, PERPENDICULAR TO, AND EXTENDING 0.510-INCH ABOVE, DATUM A, MAXIMUM MATERIAL CONDITION</p> <p>2.000 THEORETICALLY EXACT DIMENSION IS 2.000 OR 2.000 BSC</p> <p>0.020 A A 0.020</p>
<p>NOTE: DATUM MAY APPEAR AT EITHER SIDE OF TOLERANCE FRAME</p>	

True Position Dimensioning Symbols
Figure 601

52-48-51

REPAIR-GENERAL

01.1

Page 603

Dec 01/95

HINGE ASSEMBLY – REPAIR 1-1

149T7212-1, -2, -3

NOTE: Refer to REPAIR-GEN for list of applicable standard practices.

1. Bushing Replacement (85, 90, 95, 100, IPL Fig. 1; 32, 33, IPL Fig. 3; 31, 32, IPL Fig. 4)
 - A. Remove bushings.
 - B. Install bushings as specified in 20-50-03.
 - C. Ream bushings (85, 90, 95, 100, IPL Fig. 1; 32, 33, IPL Fig. 3; 31, 32, IPL Fig. 4) to 0.192/0.194 diameter.
2. Refinish
 - A. Hinges (105, 110, 115, 120, IPL Fig. 1; 35, 40, 45, IPL Fig. 3, 33, 35, 40, IPL Fig. 4) -- Chromic acid anodize, type 1 and apply one coat BMS 10-11, type 1 primer (F-18.13). Apply one coat BMS 10-11, type 2 enamel, BAC702 white gloss (F-21.03). Chromic acid anodize (F-17.04) only in the holes for the bushings. Omit primer and enamel from the holes for the bushings. Material: Aluminum alloy.

52-48-51

REPAIR 1-1

01.1

Page 601

Mar 01/00

FITTING ASSEMBLY - REPAIR 2-1

149T7217-1, -2

NOTE: Refer to REPAIR-GEN for list of applicable standard practices.

1. Bushing Replacement (545, 550, IPL Fig. 1; 440, 445, IPL Fig. 3; 220, 225, IPL Fig. 4)

A. Remove bushings.

B. Install bushings as specified in 20-50-03.

C. Machine bushings as shown in Fig. 601.

D. Fillet seal the periphery of the bushing ends with BMS 5-95 sealant as shown in Fig. 601.

2. Refinish

A. Fittings (555, 560, IPL Fig. 1; 450, IPL Fig. 3, 230, IPL Fig. 4) -- Chromic acid anodize, type 1 and apply one coat BMS 10-11, type 1 primer (F-18.13). Apply one coat BMS 10-11, type 2 enamel, BAC702 white gloss (F-21.03). Chromic acid anodize (F-17.04) only in the holes for the bushings. Omit primer and enamel from the holes for the bushings.
Material: Al alloy.

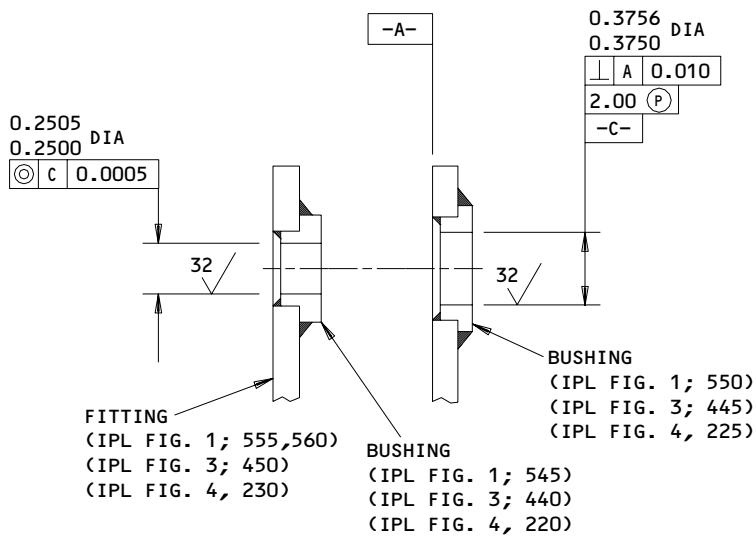
52-48-51

REPAIR 2-1

01.1

Page 601

Mar 01/00



ALL DIMENSIONS ARE IN INCHES

Bushing Replacement
 Figure 601

52-48-51

REPAIR 2-1

Page 602

Mar 01/00

01.1


BOEING
 COMPONENT
 MAINTENANCE MANUAL
MISCELLANEOUS PARTS - REPAIR 3-1

1. Refinish of these parts consists of restoration of original finish.

IPL FIG. & ITEM	MATERIAL	FINISH
<u>Fig. 1</u>		
Door assy (1,5)		For the internal surfaces of the door assy: Chemical treat and apply BMS 10-11, type 1 primer and BMS 10-11, type 2 enamel (F-21.12).
Seals (200,215,230,245,260,275)	Rubber	No finish (F-25.01).
Retainers (205,220,235,250,265,280)	Aluminum alloy	Chemical treat and apply BMS 10-11, type 1 primer (F-18.06). Apply BMS 10-11, type 2 enamel (F-21.03).
Bond Assy (505,510)		Finish the external surface as follows: Prepare the surface (SRF-14.672). Apply BMS 10-21 coating (SRF-14.685). Apply BMS 10-79, type 2 primer (F-19.46). For additional finish, see Fig. 603.
Rod Assy (565,570)		Chemical treat and apply BMS 10-11, type 1 primer and BMS 10-11, type 2 enamel (F-21.12).
Spacer (585)	Aluminum alloy	Apply one coat BMS 10-11, type 1 primer (F-20.02) all surfaces. Apply one coat BMS 10-11, type 2 enamel, BAC702 white (F-21.03) to exterior surface only.
End (615)	17-4PH CRES, 180-200 ksi	Cadmium plate with a plate thickness of 0.0003 inch, and post-plate chromate treat (F-1.20). Apply one coat BMS 10-11, type 1 primer (F-20.02).

Refinish Details
 Figure 601 (Sheet 1)

52-48-51

REPAIR 3-1

01.1

Page 601

Mar 01/00

IPL FIG. & ITEM	MATERIAL	FINISH
Fittings (655,660)	Aluminum alloy	Chromic acid anodize, type 1 and apply one coat BMS 10-11, type 1 primer (F-18.13). Apply one coat BMS 10-11, type 2 enamel, BAC702 white (F-21.03).
Tubes (630,635)	Aluminum alloy	See Fig. 602.
Filler (675)		Chemical treat and apply BMS 10-11, type 1 primer and BMS 10-11, type 2 enamel (F-21.12).
Catch (685)	1095 Steel, 180-220 ksi	Cadmium plate and apply one coat BMS 10-11, type 1 primer (F-16.01) or (F-16.03).
<u>Fig. 3</u>		
Door assy (1A,5)		For the internal surfaces of the door assy: Chemical treat and apply BMS 10-11, type 1 primer and BMS 10-11, type 2 enamel (F-21.12).
Retainers (85,90, 95,100)	Aluminum alloy	Chemical treat and apply BMS 10-11, type 1 primer (F-18.06). Apply BMS 10-11, type 2 enamel (F-21.03).
Seals (105,110, 115,120)	Rubber	No finish (F-25.01).
Bond Assy (455)		Finish the external surface as follows: Prepare the surface (SRF-14.672). Apply BMS 10-21 (SRF-14.685). Apply BMS 10-79, type 2 primer (F-19.46). For additional finish, see Fig. 603.

Refinish Details
 Figure 601 (Sheet 2)

52-48-51

REPAIR 3-1

01.1 Page 602

Mar 01/00


BOEING
 COMPONENT
 MAINTENANCE MANUAL

IPL FIG. & ITEM	MATERIAL	FINISH
Bond Assy (460,465)		Finish the external surface as follows: Prepare the surface (F-14.679). Apply BMS 10-21 coating (SRF-14.685). Apply BMS 10-103, type 1 primer (F-14.692). For additional finish, see Fig. 603.
<u>Fig. 4</u>		
Door assy (1A)		For the internal surfaces of the door assy: Chemical treat and apply BMS 10-11, type 1 primer and BMS 10-11, type 2 enamel (F-21.12).
Retainers (80,85,90,95,100)	Alluminum alloy	Chemical treat and apply BMS 10-11, type 1 primer (F-18.06). Apply BMS 10-11, type 2 enamel (F-21.03).
Seals (110,115,120,130)	Rubber	No finish (F-25.01).
Bond Assy (235)		Finish the external surface as follows: Prepare the surface (SRF-14.672). Apply BMS 10-21 coating (SRF-14.685). Apply BMS 10-79, type 2 primer (F-19.46). For additional finish, see Fig. 603.

Refinish Details
 Figure 601 (Sheet 3)

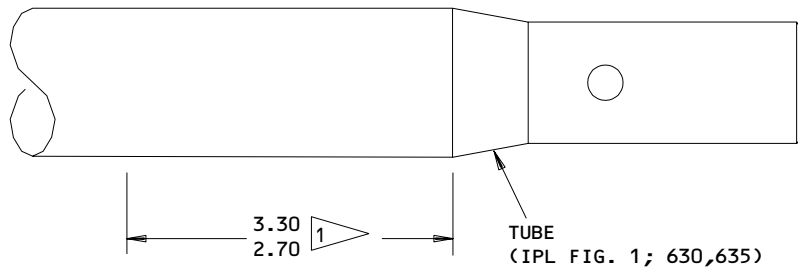
52-48-51

REPAIR 3-1

01.1

Page 603

Mar 01/00



REFINISH

CHEMICALLY TREAT INTERIOR AND EXTERIOR SURFACES (COLORED FILM) AND APPLY ONE COAT BMS 10-11, TYPE 1 PRIMER (F-18.07). EXTERIOR SURFACE ONLY APPLY ONE COAT BMS 10-11, TYPE 2, ENAMEL, BAC702 WHITE GLOSS (F-21.03), EXCEPT THAT AREA COVERED BY 1.

MATERIAL: AL ALLOY
ALL DIMENSIONS ARE IN INCHES

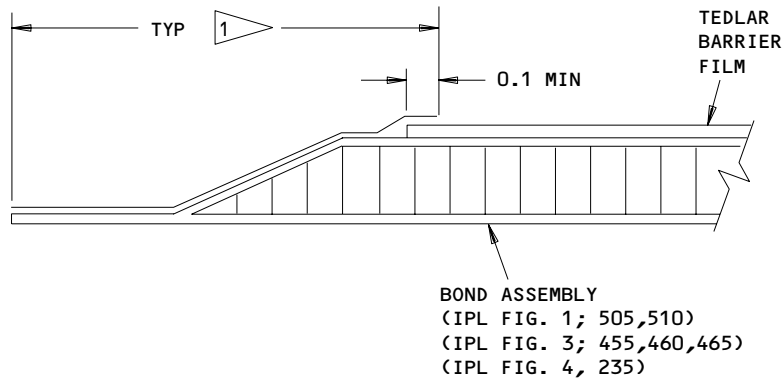
1 PREPARE SURFACE AND APPLY BMS 10-86, TYPE 1, WHITE AS SPECIFIED IN SOPM 20-44-01, TYPE 27 (SRF-14.9624).

149T7219-3,-4
Refinish of Tube
Figure 602

52-48-51

REPAIR 3-1
Page 604
Mar 01/00

01.1



1 APPLY ONE COAT BMS 10-11, TYPE 1 PRIMER (F-20.02) AND PREPARE SURFACE AND APPLY BMS 10-86, TYPE 1, WHITE (NOT TO EXCEED 0.010 INCH) AS SPECIFIED IN SOPM 20-44-01, TYPE 27 (SRF-14.9624).

ALL DIMENSIONS ARE IN INCHES

149T7210-5,-6,-47,-48,-65,-66,-71,-72
 Refinish of Bond Assembly
 Figure 603

52-48-51

REPAIR 3-1

Page 605

Mar 01/00

01.1

ASSEMBLY1. Materials

NOTE: Equivalent substitutes may be used.

A. Primer -- BMS 10-11, type 1 (Ref 20-60-02)

B. Sealant -- BMS 5-95 (Ref 20-60-04)

2. Assembly (IPL Fig. 1)

CAUTION: ONLY TITANIUM OR CORROSION RESISTANT STEEL FASTENERS SHALL BE USED WITH GRAPHITE COMPOSITES. SUBSTITUTION WITH ALUMINUM OR PLATED ALLOY STEEL FASTENERS IS NOT ALLOWED AS GALVANIC CORROSION WILL SHORTEN COMPONENT SERVICE LIFE.

A. Use standard industry practices for assembly of this component, and the following additional procedures.

B. Fix seals (200, 215, 230, 245, 260, 275) to respective retainers (205, 235, 250, 265, 280) with safety wire per 20-50-02.

C. Install bond jumpers (130A, 135A) as specified in 20-11-03 and check that maximum resistance does not exceed 0.001 ohm.

D. Install bolt (140, 145) checking conductance as specified in 20-10-06, and resistance as specified in 20-11-03.

E. Install rod assembly (565, 570) as follows:

(1) Apply BMS 5-95 sealant to the rod end (615) and install wet.

(2) Apply BMS 5-95 sealant to bolt (620) and collar (625) and install wet.

(3) Fillet seal the rod end (615) with BMS 5-95 sealant.

(4) When rod assemblies (565, 570) are in stowed position, store cowl pin (595) in hole in the rod end (615) as shown in Fig. 701.

(5) Tighten nuts (540) to a torque of 20-30 pound-inches.

(6) Tighten nut (590) to a torque of 50-80 pound-inches.

52-48-51ASSEMBLY
Page 701
Mar 01/00

01.1

- F. Apply BMS 5-95 sealant to bolts (35, 40, 45, 50, 425A, 430A, 465A, 470A, 525, 640, 665) and washers (55, 60, 435, 440, 475, 480, 530, 670) and install wet.
- G. Install bolts (35, 40, 45, 50, 140, 145, 425A, 430A, 465A, 470A, 525, 640) with head protrusions within -0.005 to +0.010 inch. Do not shave heads.
- H. Tighten nuts (75, 80) used with bolts (35, 40) to a torque range of 20-30 pound-inches.
- I. Apply BMS 5-95 sealant with a brush to the threaded end of the bolts (35, 40, 45, 50, 425A, 430A, 465A, 470A, 525, 640, 665) and mating parts as specified in 20-50-19.
- J. Apply one coat BMS 10-79, type 2 primer to inner surface of drain hole in edge of the door.
- K. Re-stencil the identification number 193 NL for the left door and 194 LR for the right door as specified in 20-50-10. Stencil using BMS 10-11, type 2 enamel, BAC701 black. Make characters 0.5 inch high.

3. Assembly (IPL Fig. 3)

CAUTION: ONLY TITANIUM OR CORROSION RESISTANT STEEL FASTENERS SHALL BE USED WITH GRAPHITE COMPOSITES. SUBSTITUTION WITH ALUMINUM OR PLATED ALLOY STEEL FASTENERS IS NOT ALLOWED AS GALVANIC CORROSION WILL SHORTEN COMPONENT SERVICE LIFE.

- A. Use standard industry practices for assembly of this component, and the following additional procedures.
- B. Fix seals (105, 110, 115, 120) to respective retainers (85, 90, 95, 100) with safety wire as specified in 20-50-02.
- C. Install bond jumpers (75) as specified in 20-11-03 and check that maximum resistance does not exceed 0.001 ohm.
- D. Install bolt (50) checking conductance as specified in 20-10-06, and resistance as specified in 20-11-03.

52-48-51

ASSEMBLY

01.1

Page 702

Mar 01/00

**BOEING**
COMPONENT
MAINTENANCE MANUAL

- E. Apply BMS 5-95 sealant to bolts (10, 15, 130, 135, 140, 200, 205, 210, 415) and washers (17, 145, 160, 165, 205, 210, 215, 420) and install wet.
- F. Install bolts (10, 15, 130, 135, 140, 200, 205, 210, 415) with head protrusions with -0.005 to +0.010 inch. Do not shave heads.
- G. Tighten nuts (20) used with bolts (10) to a torque range of 20-30 pound-inches.
- H. Apply BMS 5-95 sealant with a brush to the threaded end of the bolts (10, 15, 50, 130, 200, 415) and mating parts as specified in 20-50-19.
- I. Apply one coat BMS 10-79, type 2 primer to inner surface of drain hole in edge of the door.
- J. Re-stencil the identification number 193 NL for the left doors and 194 LR for the right door as specified in 20-50-10. Stencil using BMS 10-11, type 2 enamel, BAC701 black. Make characters 0.5 inch high.

4. Assembly (IPL Fig. 4)

CAUTION: ONLY TITANIUM OR CORROSION RESISTANT STEEL FASTENERS SHALL BE USED WITH GRAPHITE COMPOSITES. SUBSTITUTION WITH ALUMINUM OR PLATED ALLOY STEEL FASTENERS IS NOT ALLOWED AS GALVANIC CORROSION WILL SHORTEN COMPONENT SERVICE LIFE.

- A. Use standard industry practices for assembly of this component, and the following additional procedures.
- B. Fix seals (105, 110, 115, 120, 130) to respective retainers (80, 85, 90, 95, 100) with safety wire as specified in 20-50-02.
- C. Install bond jumpers (70)) as specified in 20-11-03 and check that maximum resistance does not exceed 0.001 ohm.
- D. Install bolt (45) checking conductance as specified in 20-10-06, and resistance as specified in 20-11-03.

52-48-51ASSEMBLY
Page 703
Mar 01/00

01.1

- E. Apply BMS 5-95 sealant to bolts (5, 10, 135, 165, 195) and washers (15, 140, 170, 200) and install wet.
- F. Install bolts (5, 10, 45, 135, 165, 195) with head protrusions within -0.005 to +0.010 inch. Do not shave heads.
- G. Tighten nuts (18) used with bolts (5) to a torque range of 20-30 pound-inches.
- H. Apply BMS 5-95 sealant with a brush to the threaded end of the bolts (5, 10, 135, 165, 195) and mating parts as specified in 20-50-19.
- I. Apply one coat BMS 10-79, type 2 primer to inner surface of drain hole in edge of the door.
- J. Re-stencil the identification number, 194 LR on the door as specified in 20-50-10. Stencil using BMS 10-11, type 2 enamel, BAC701 black. Make characters 0.5 inch high.

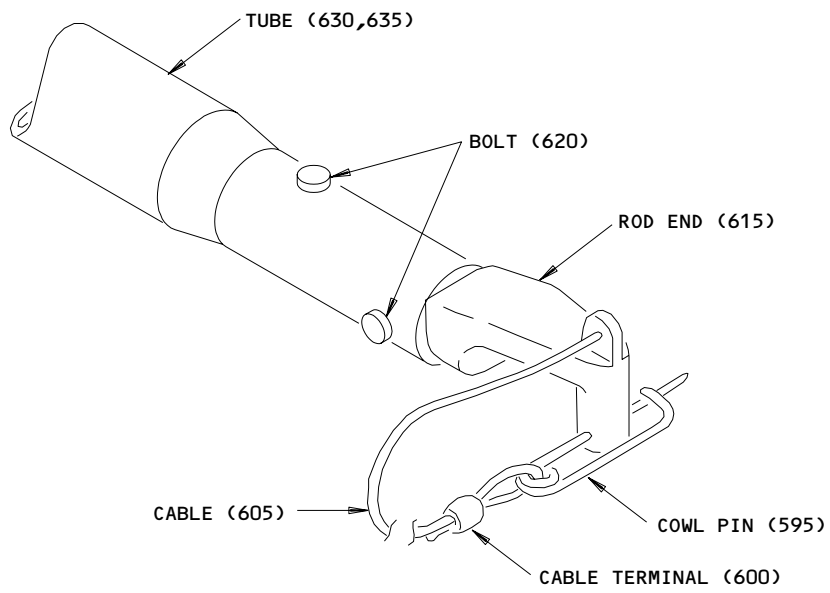
52-48-51

ASSEMBLY

01.1

Page 704

Mar 01/00



ITEM NUMBERS REFER TO IPL FIG. 1

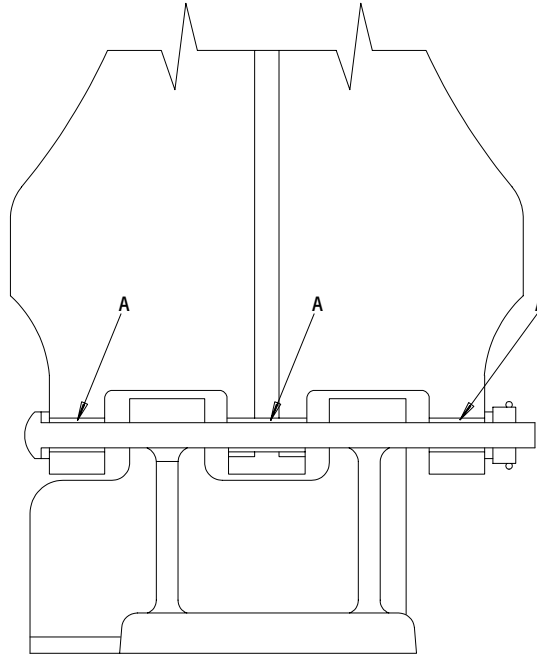
Rod Assembly Storage
Figure 701

52-48-51

ASSEMBLY
Page 705
Mar 01/00

01.1

FITS AND CLEARANCES



SIDE HINGE ASSEMBLY

Ref Letter Fig.801	Mating Item No. IPL Fig. 1	Design Dimension				Service Wear Limit		
		Dimension		Assembly Clearance		Dimension		Maximum Clearance
		Min	Max	Min	Max	Min	Max	
A	ID 17,18,20,25 OD 30	0.1879	0.1895	0.0005	0.0036	0.185	0.206	0.018

ALL DIMENSIONS ARE IN INCHES

Fits and Clearances
 Figure 801

52-48-51

FITS AND CLEARANCES
 01.1 Page 801
 Oct 01/90

REF IPL		NAME	TORQUE*	
FIG. NO.	ITEM NO.		POUND-INCHES	POUND-FEET
1	75,80,540	NUT	20-30	
1	590	NUT	50-80	
3	20	NUT	20-30	
4	18	NUT	20-30	

* REFER TO SOPM 20-50-01 FOR TORQUE VALUES OF STANDARD FASTENERS

Torque Table
 Figure 802

52-48-51

FITS AND CLEARANCES
 01.1 Page 802
 Mar 01/00



ILLUSTRATED PARTS LIST

1. This section lists and illustrates replaceable or repairable component parts. The Illustrated Parts Catalog contains a complete explanation of the Boeing part numbering system.

2. Indentures show parts relationships as follows:

Assembly

Detail Parts for Assembly

Subassembly

Attaching Parts for Subassembly

Detail Parts for Subassembly

Detail Installation Parts (Included only if installation parts may be returned to shop as part of assembly)

3. One use code letter (A, B, C, etc.) is assigned in the EFF CODE column for each variation of top assembly. All listed parts are used on all top assemblies except when limitations are shown by use code letter opposite individual part entries.

4. Letter suffixes (alpha-variants) are added to item numbers for optional parts, Service Bulletin modification parts, configuration differences (except left- and right-hand parts), product improvement parts, and parts added between two sequential item numbers. The alpha-variant is not shown on illustrations when appearance and location of all variants of the part is the same.

5. Service Bulletin modifications are shown by the notations PRE SB XXXX and POST SB XXXX.

A. When a new top assembly part number is assigned by Service Bulletin, the notations appear at the top assembly level only. The configuration differences at detail part level are then shown by use code letter.

B. When the top assembly part number is not changed by the Service Bulletin, the notations appear at the detail part level.

6. Parts Interchangeability

Optional
(OPT)

The parts are optional to and interchangeable with other parts having the same item number.

Supersedes, Superseded By
(SUPSDS, SUPSD BY)

The part supersedes and is not interchangeable with the original part.

Replaces, Replaced By
(REPLS, REPLD BY)

The part replaces and is interchangeable with, or is an alternate to, the original part.

52-48-51

ILLUSTRATED PARTS LIST

01.1

Page 1001

Oct 10/83

VENDORS

08524 DEUTSCH FASTENER CORP SEE CODE V97928

11328 AEROQUIP CORP LINAIR DIV
651 WEST KNOX STREET
GARDENA, CALIFORNIA 90248-4409

22277 BELL-MEMPHIS INC
1650 CHANNEL AVENUE PO BOX 13187
MEMPHIS, TENNESSEE 38113-1524

26590 HOOD INDUSTRIES
4615 SHEPARD STREET
BAKERSFIELD, CALIFORNIA 93309

56110 SWAYNE, A.D. COMPANY INC
8721 14TH SOUTH
SEATTLE, WASHINGTON 98108

56878 SPS TECHNOLOGIES INC AEROSPACE AND INDUSTRIAL PRODUCTS DIV
HIGHLAND AVENUE
JENKINTOWN, PENNSYLVANIA 19046

60516 WEST COAST AEROSPACE INC
812 MIRAFLORES STREET
SAN PEDRO, CALIFORNIA 90731-1439

65196 CABLEWARE TECHNOLOGY INC
900 INDUSTRIAL BLVD. PO BOX 7515
NAPLES, FLORIDA 33941

73197 HI-SHEAR TECHNOLOGY CORP
2600 SKYPARK DRIVE
TORRANCE, CALIFORNIA 90509

80523 BABCOCK ACCO INC ACCO CONTROLS GROUP SUB OF BABCOCK INTL
1014 ERIE STREET PO BOX 608
ADRIAN, MICHIGAN 49221-0608

80539 SPS TECHNOLOGIES INC AEROSPACE PRODUCTS DIV
2701 SOUTH HARBOR BOULEVARD PO BOX 1259
SANTA ANA, CALIFORNIA 92702-1259

52-48-51

ILLUSTRATED PARTS LIST
01.1 Page 1002
Mar 01/00

**BOEING**
COMPONENT
MAINTENANCE MANUALVENDORS

81205	BOEING CO THE 7755 EAST MARGINAL WAY PO BOX 3707 SEATTLE, WASHINGTON 98124
83014	HARTWELL CORPORATION 900 SOUTH RICHFIELD ROAD PLACENTIA, CALIFORNIA 92670-6732
84256	AVIBANK MANUFACTURING COMPANY 210 SOUTH VICTORY BLVD PO BOX 391 BURBANK, CALIFORNIA 91503
92215	FAIRCHILD IND INC FAIRCHILD AEROSPACE FASTENER DIV 3010 W LOMITA BLVD TORRANCE, CALIFORNIA 90505-5102
97928	DEUTSCH FASTENER CORP 3969 PARAMONT BOULEVARD LAKEWOOD, CALIFORNIA 90712-4193

52-48-51ILLUSTRATED PARTS LIST
01.1 Page 1003
Mar 01/00

PART NUMBER	AIRLINE PART NO.	FIG.	ITEM	TTL REQ
AN960-10L		1	160	10
		1	165	12
		3	55	10
		4	50	12
AN960D10L		1	170	10
		1	175	12
		3	60	10
AN960PD10		4	55	12
		1	65	24
		1	70	30
		3	18	24
AN960PD10L		4	17	30
		1	485	26
		1	490	24
		1	535	4
AN960PD416 AN960PD8L		3	230	20
		3	235	6
		3	425	4
		4	175	24
		4	205	4
		1	580	2
		1	445	52
		1	450	48
		3	170	40
		3	175	12
BACB28AM06B013A		4	145	48
		1	550	1
		3	445	1
		4	225	1
BACB28Y3M044		1	85	8
		1	90	2
		3	32	8
		4	31	10
BACB28Y3M059		1	95	4
		1	100	5
		3	33	4
		4	32	5
BACB30FM5A13 BACB30LH2-6		1	620	2
		1	425A	52
		1	430A	48
		3	130	40
		3	135	12
		3	140	8
		4	135	48

52-48-51

 ILLUSTRATED PARTS LIST
 01.1 Page 1004
 Mar 01/00


BOEING
 COMPONENT
 MAINTENANCE MANUAL

PART NUMBER	AIRLINE PART NO.	FIG.	ITEM	TTL REQ
BACB30LH3-25		1	45	8
BACB30LH3-25		1	50	10
		1	525	4
		3	15	8
		3	415	4
		4	10	10
		4	195	4
BACB30LH3-3		1	140	10
		1	145	12
		3	50	10
		4	45	12
BACB30LH3-6		1	465A	26
		1	470A	24
		3	200	20
		3	205	6
		3	210	4
		4	165	24
BACB30LH3-8		3	10A	16
BACB30LR3-23		1	640	4
		1	665	2
BACB30LR3-8		1	35	16
		1	40	20
		3	10	16
		4	5	20
BACC30M5		1	625	2
BACF33C111-075D		1	675	2
BACJ40A20-8		1	130A	10
		1	135A	12
		3	75	10
		4	70	12
BACN10JC08CD		1	455	52
		1	460	48
		3	185	40
		3	190	12
		3	195	8
		4	160	48
BACN10JC3CD		1	75	24
		1	80	30
		1	190	10
		1	195	12
		1	495	26
		1	500	24
		1	540	4
		1	650	4
		1	680	2
		3	20	24

52-48-51

 ILLUSTRATED PARTS LIST
 01.1 Page 1005
 Mar 01/00

PART NUMBER	AIRLINE PART NO.	FIG.	ITEM	TTL REQ
BACN10JC3CD		3	70	10
		3	245	20
		3	250	6
		3	255	4
		3	430	4
		4	18	30
		4	65	12
		4	180	24
		4	210	4
		1	590	1
BACN10JC43CD		1	32	1
BACN10JD103CD		1	210	7
BACR15BB4AD		1	225	10
		1	240	22
		1	255	7
		1	270	9
		1	285	15
		3	80	46
		4	75	63
BACS40R008F035F		3	275	20
		3	280	6
		3	285	4
		4	190	12
BACT14A4		1	600	1
BACT14B2		1	610	1
BACW10UC10P		1	55	24
		1	60	30
		1	180	10
		1	185	12
		1	475	26
		1	480	24
		1	530	4
		1	645	4
		1	670	2
		3	17	24
		3	65	10
		3	215	20
		3	220	6
		3	225	4
		3	420	4
		4	15	30
	4	60	12	
	4	170	24	
	4	200	4	

52-48-51

 ILLUSTRATED PARTS LIST
 01.1 Page 1006
 Mar 01/00


BOEING
 COMPONENT
 MAINTENANCE MANUAL

PART NUMBER	AIRLINE PART NO.	FIG.	ITEM	TTL REQ
BACW10UC8P		1	435	52
BACW10UC8P		1	440	48
		3	145	40
		3	160	12
		3	165	8
		4	140	48
BA3-2		1	610	1
BCREF5029		1	675	2
BM2487-2		1	610	1
BM2488A4		1	600	1
HI2099		1	600	1
HI2487-2		1	610	1
HL440UC5-13		1	620	2
HL70-5		1	625	2
HT100-4		1	600	1
HT200-2		1	610	1
H2911-1		1	415B	13
		1	420B	12
		3	260	10
		3	265	3
		3	270	2
		4	185	12
MS24665-151		1	33	1
NAS1149DN816J		3	170A	40
		3	180	8
NAS1149D0316H		3	55A	10
NAS1149D0316J		3	230A	20
		3	240	4
		3	425A	4
NAS1149D0363J		3	18A	24
NAS1149F0332P		3	60A	10
NAS42DD8-32		1	585	2
NAS620A10		1	31	2
NAS6604-19		1	575	1
NO2		1	595A	1
RA2487-2		1	610	1
ST2099		1	600	1
WC130-5-13		1	620	2
10-61334-7		1	415B	13
		1	420B	12
		3	260	10
		3	265	3
		3	270	2
		4	185	12

52-48-51

 ILLUSTRATED PARTS LIST
 01.1 Page 1007
 Mar 01/00

PART NUMBER	AIRLINE PART NO.	FIG.	ITEM	TTL REQ
149T7210-1		1	1	RF
149T7210-2		1	5	RF
149T7210-24		1	205	1
		3	85	1
		4	80	1
149T7210-25		1	220	1
		3	90	1
		4	85	1
149T7210-26		1	235	2
		3	95	2
		4	90	2
149T7210-27		1	250	1
		3	100	1
149T7210-28		1	265	1
		4	95	1
149T7210-29		1	280	1
		4	100	1
149T7210-30		1	200	1
		3	105	1
		4	105	1
149T7210-31		1	215	1
		3	110	1
		4	110	1
149T7210-32		1	230	2
		3	115	2
		4	115	2
149T7210-33		1	245	1
		3	120	1
149T7210-34		1	260	1
		4	120	1
149T7210-35		1	275	1
		4	130	1
149T7210-47		1	505A	1
149T7210-48		1	510A	1
149T7210-5		1	505	1
149T7210-5011		1	502	1
149T7210-5012		1	504	1
149T7210-5013		1	502A	1
149T7210-5014		1	504A	1
149T7210-6		1	510	1
149T7210-63		1	1C	RF
		3	1A	RF
149T7210-64		1	5C	RF
		4	1A	RF

52-48-51

 ILLUSTRATED PARTS LIST
 01.1 Page 1008
 Mar 01/00


BOEING
 COMPONENT
 MAINTENANCE MANUAL

PART NUMBER	AIRLINE PART NO.	FIG.	ITEM	TTL REQ
149T7210-65		3	455	1
149T7210-66		4	235	1
149T7210-69		1	1D	RF
		3	1B	RF
149T7210-70		1	5D	RF
		3	5	RF
149T7210-7001		1	10B	1
149T7210-7002		1	15B	1
149T7210-71		3	465	1
149T7210-72		3	470	1
149T7212-1		1	17	1
		3	25	1
		4	20	1
149T7212-2		1	18	1
		3	30	1
		4	25	1
149T7212-3		1	20	2
		1	25	3
		3	31	2
		4	30	3
149T7212-7		1	105	1
		3	35	1
		4	33	1
149T7212-8		1	110	1
		3	40	1
		4	35	1
149T7212-9		1	115	2
		1	120	3
		3	45	2
		4	40	3
149T7216-1		1	655	1
149T7216-2		1	660	1
149T7217-1		1	515	1
		3	435	1
149T7217-2		1	520	1
		4	215	1
149T7217-3		1	555	1
		3	450	1
149T7217-4		1	560	1
		4	230	1
149T7219-1		1	565	1
149T7219-2		1	570	1
149T7219-3		1	630	1
149T7219-4		1	635	1
149T7219-5		1	605	1
149T7220-1		1	685	2

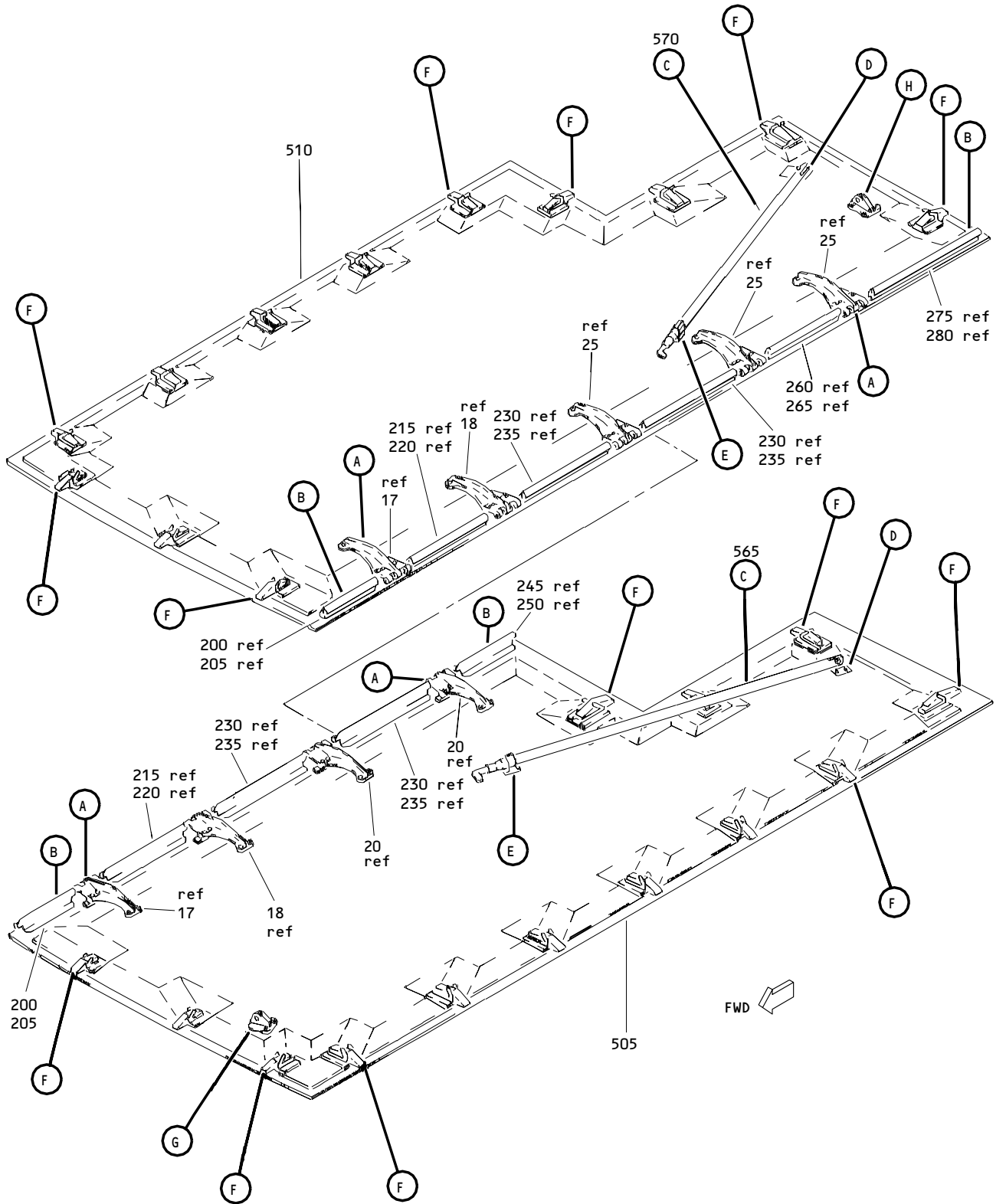
52-48-51

 ILLUSTRATED PARTS LIST
 01.1 Page 1009
 Mar 01/00

PART NUMBER	AIRLINE PART NO.	FIG.	ITEM	TTL REQ
149T7221-1		1	545	1
		3	440	1
		4	220	1
		1	30	1
149T7222-1		1	615	1
66-8309-3		1	625	2
66014-5		1	620	2
67067-5A13		1	600	1
8-04057-4		1	415B	13
9285-7		1	420B	12
		3	260	10
		3	265	3
		3	270	2
		4	185	12

52-48-51

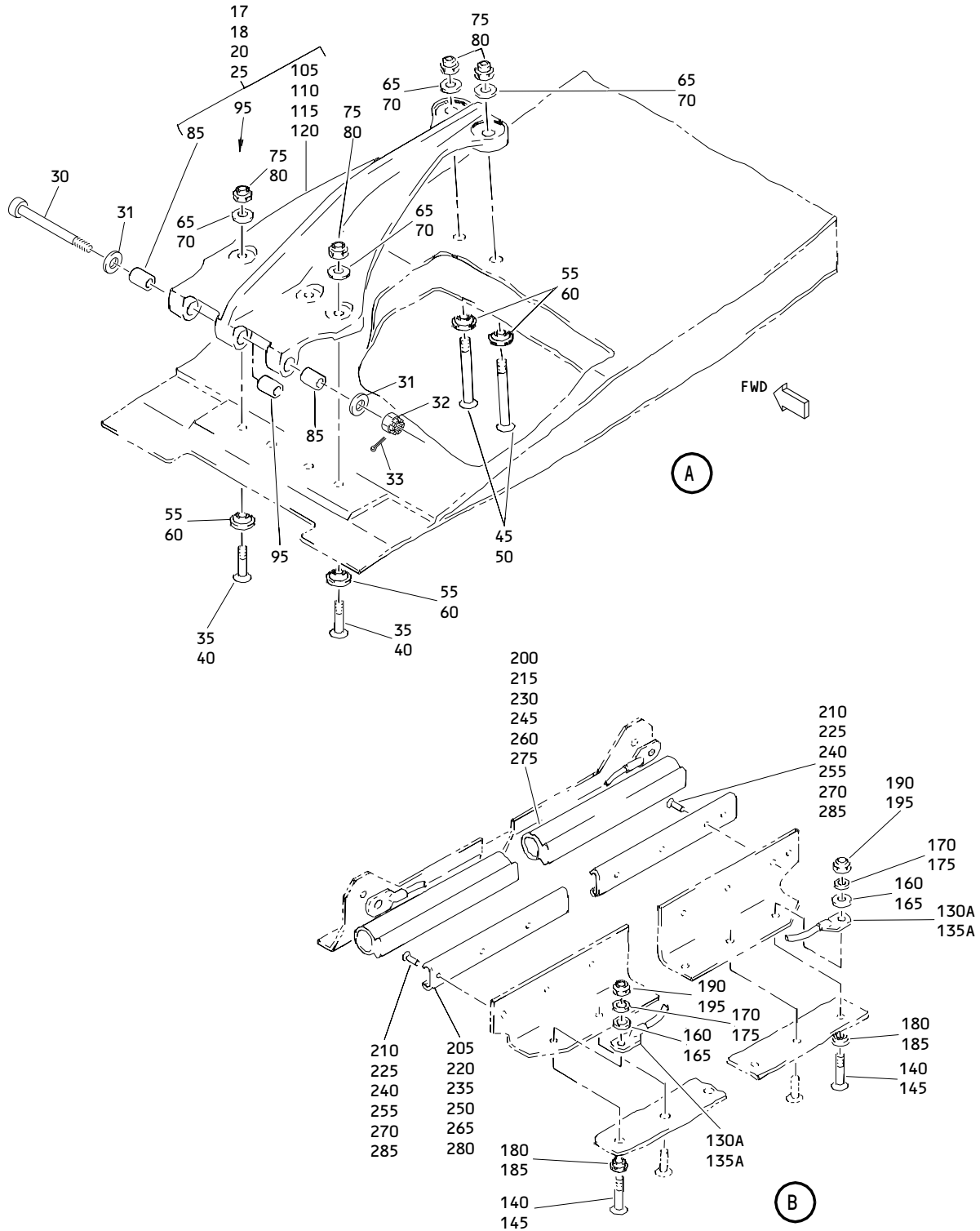
 ILLUSTRATED PARTS LIST
 01.1 Page 1010
 Mar 01/00



Underwing Fairing ECS Door Assembly
Figure 1 (Sheet 1)

52-48-51

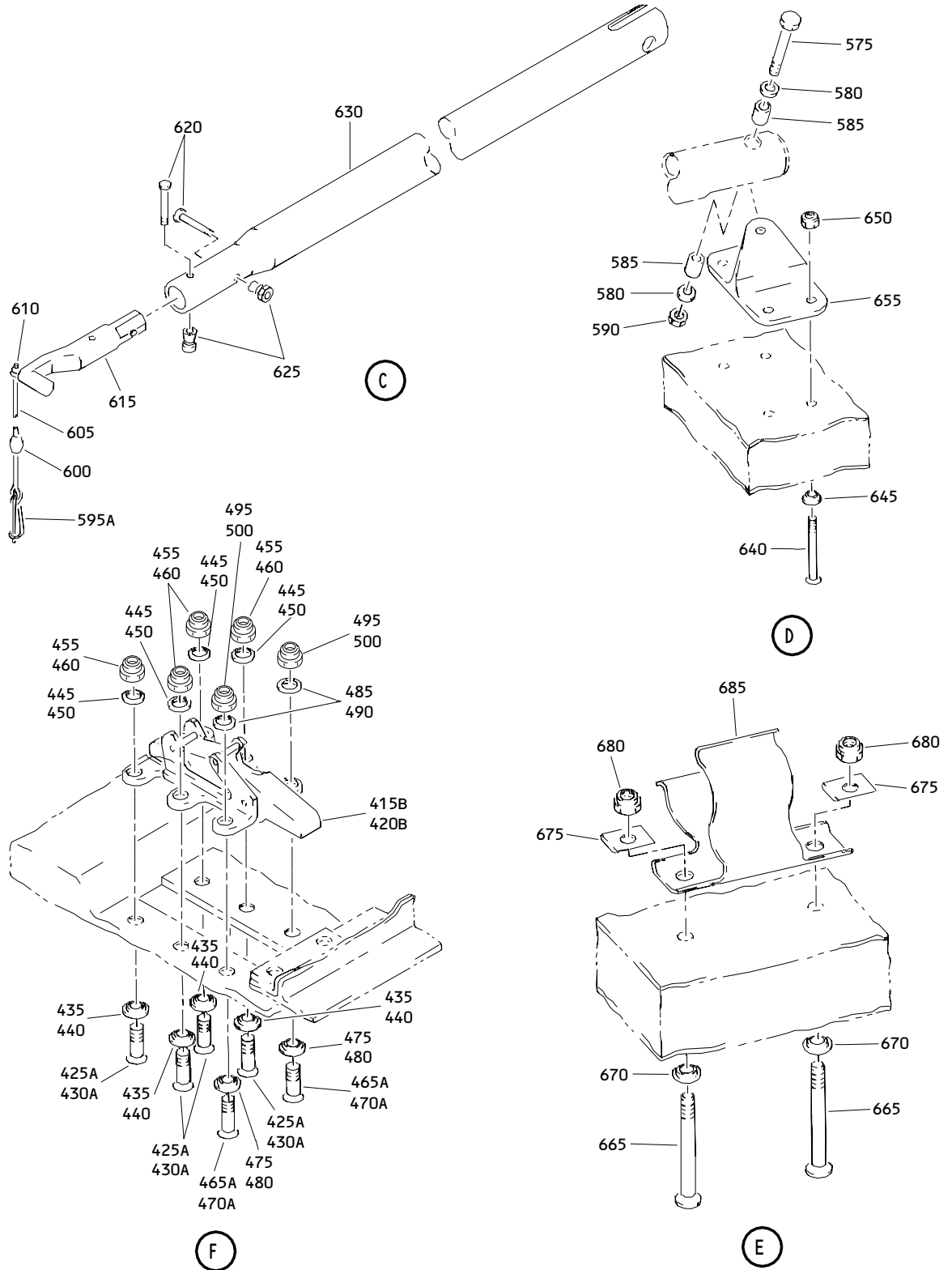
ILLUSTRATED PARTS LIST
01.1 Page 1011
Mar 01/00

**COMPONENT
MAINTENANCE MANUAL**


Underwing Fairing ECS Door Assembly
Figure 1 (Sheet 2)

52-48-51

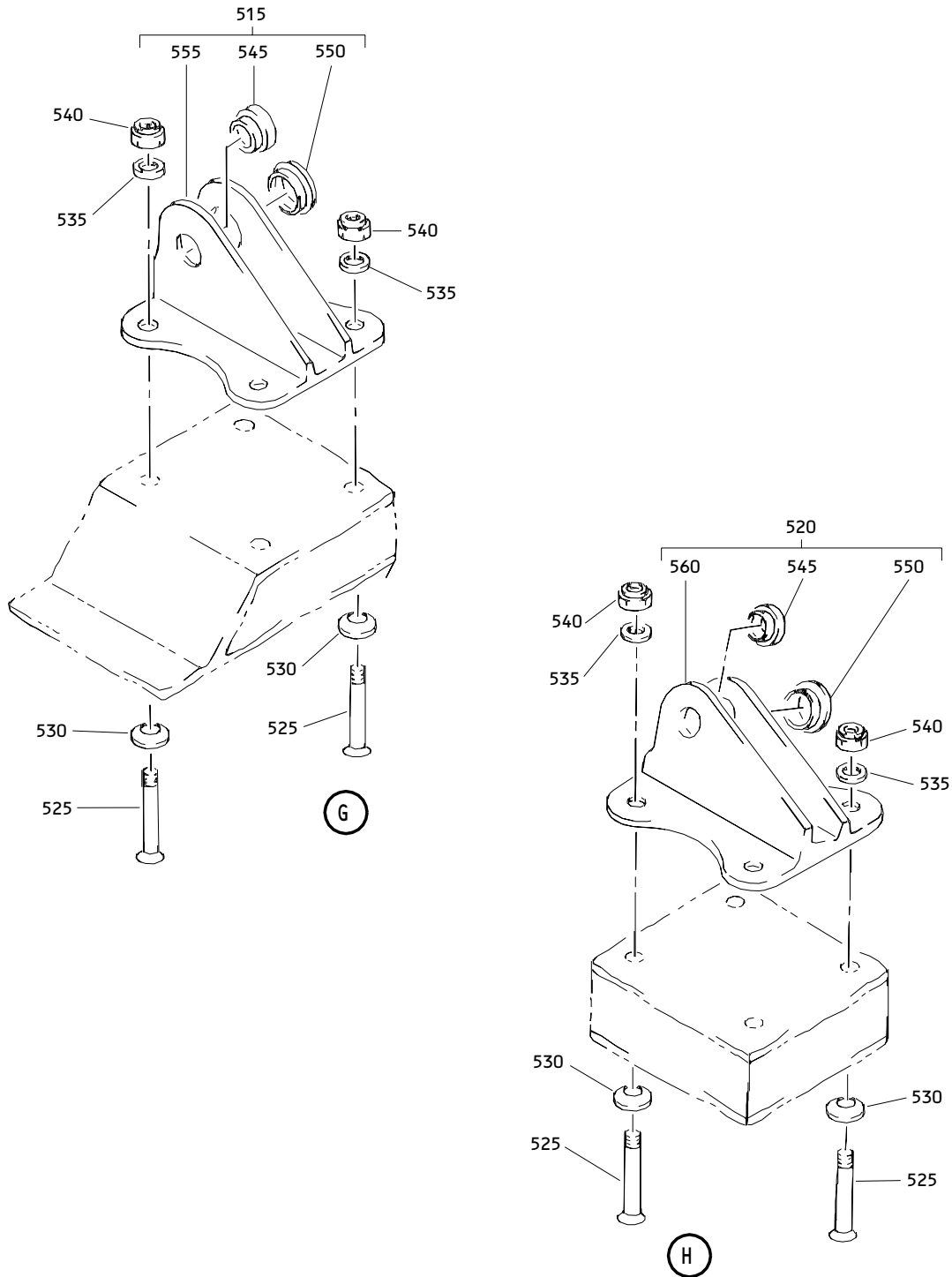
ILLUSTRATED PARTS LIST
01.1 Page 1012
Mar 01/00



Underwing Fairing ECS Door Assembly
 Figure 1 (Sheet 3)

52-48-51

ILLUSTRATED PARTS LIST
 01.1 Page 1013
 Mar 01/00



Underwing Fairing ECS Door Assembly
 Figure 1 (Sheet 4)

52-48-51

ILLUSTRATED PARTS LIST
 01.1 Page 1014
 Mar 01/00


BOEING
 COMPONENT
 MAINTENANCE MANUAL

FIG. & ITEM	PART NO.	AIRLINE PART NUMBER	NOMENCLATURE 1234567	EFF CODE	QTY PER ASSY
01- -1	149T7210-1		DOOR ASSY-UNDERWING FAIRING ENVIRONMENTAL CONT SYS (LH)	A	RF
-1A	149T7210-3		DELETED		
-1B	149T7210-45		DELETED		
-1C	149T7210-63		DOOR ASSY-UNDERWING FAIRING ENVIRONMENTAL CONT SYS (LH) (FOR DETAILS SEE FIG. 3)	C	RF
-1D	149T7210-69		DOOR ASSY-UNDERWING FAIRING ENVIRONMENTAL CONT SYS (LH) (FOR DETAILS SEE FIG. 3)	E	RF
-5	149T7210-2		DOOR ASSY-UNDERWING FAIRING ENVIRONMENTAL CONT SYS (RH)	B	RF
-5A	149T7210-4		DELETED		
-5B	149T7210-46		DELETED		
-5C	149T7210-64		DOOR ASSY-UNDERWING FAIRING ENVIRONMENTAL CONT SYS (RH) (FOR DETAILS SEE FIG. 4)	D	RF
-5D	149T7210-70		DOOR ASSY-UNDERWING FAIRING ENVIRONMENTAL CONT SYS (RH) (FOR DETAILS SEE FIG. 3)	F	RF
-10	149T7210-5011		DELETED		
-10A	149T7210-5013		DELETED		
-10B	149T7210-7001		.DOOR ASSY	A	1
-15	149T7210-5012		DELETED		
-15A	149T7210-5014		DELETED		

52-48-51

 ILLUSTRATED PARTS LIST
 01.1 Page 1015
 Mar 01/00

FIG. & ITEM	PART NO.	AIRLINE PART NUMBER	NOMENCLATURE 1234567	EFF CODE	QTY PER ASSY
01-					
-15B	149T7210-7002		.DOOR ASSY	B	1
17	149T7212-1		..HINGE ASSY-SIDE	A,B	1
18	149T7212-2		..HINGE ASSY-SIDE	A,B	1
20	149T7212-3		..HINGE ASSY-SIDE	A	2
25	149T7212-3		..HINGE ASSY-SIDE ATTACHING PARTS	B	3
30	149T7222-1		..PIN	A,B	1
31	NAS620A10		..WASHER	A,B	2
32	BACN10JD103CD		..NUT	A,B	1
33	MS24665-151		..PIN-COTTER	A,B	1
35	BACB30LR3-8		..BOLT	A	16
40	BACB30LR3-8		..BOLT	B	20
45	BACB30LH3-25		..BOLT	A	8
47	BACB30LH3-25		DELETED		
50	BACB30LH3-25		..BOLT	B	10
52	BACB30LH3-25		DELETED		
55	BACW10UC10P		..WASHER	A	24
57	BACW10UC10P		DELETED		
60	BACW10UC10P		..WASHER	B	30
62	BACW10UC10P		DELETED		
65	AN960PD10		..WASHER	A	24
67	AN960PD10		DELETED		
70	AN960PD10		..WASHER	B	30
72	AN960PD10		DELETED		
75	BACN10JC3CD		..NUT	A	24
77	BRH10C3MD		DELETED		
80	BACN10JC3CD		..NUT	B	30
82	BRH10C3MD		DELETED		
			-----*		
85	BACB28Y3M044		...BUSHING- (USED ON ITEMS 17, 18, 20)	A,B	2
-90	BACB28Y3M044		...BUSHING- (USED ON ITEM 25)	B	2
95	BACB28Y3M059		...BUSHING- (USED ON ITEMS 17, 18, 20)	A,B	1
-100	BACB28Y3M059		...BUSHING- (USED ON ITEM 25)	B	1
105	149T7212-7		...HINGE- (USED ON ITEM 17)	A,B	1
110	149T7212-8		...HINGE- (USED ON ITEM 18)	A,B	1

52-48-51

 ILLUSTRATED PARTS LIST
 01.1 Page 1016
 Mar 01/00


BOEING
 COMPONENT
 MAINTENANCE MANUAL

FIG. & ITEM	PART NO.	AIRLINE PART NUMBER	NOMENCLATURE 1234567	EFF CODE	QTY PER ASSY
01-115	149T7212-9		...HINGE- (USED ON ITEM 20)	A	1
120	149T7212-9		...HINGE- (USED ON ITEM 25)	B	1
130	740A21-8		DELETED		
130A	BACJ40A20-8		..JUMPER ASSY	A	10
135	740A21-8		DELETED		
135A	BACJ40A20-8		..JUMPER ASSY	B	12
140	BACB30LH3-3		..BOLT	A	10
145	BACB30LH3-3		..BOLT	B	12
160	AN960-10L		..WASHER	A	10
165	AN960-10L		..WASHER	B	12
170	AN960D10L		..WASHER	A	10
175	AN960D10L		..WASHER	B	12
180	BACW10UC10P		..WASHER	A	10
185	BACW10UC10P		..WASHER	B	12
190	BACN10JC3CD		..NUT	A	10
195	BACN10JC3CD		..NUT	B	12
			-----*-----		
200	149T7210-30		..SEAL- (MFD FROM EXTR RUBBER F25.01 BAC1530-47 X 9.4 IN.)	A,B	1
205	149T7210-24		..RETAINER-SEAL ATTACHING PARTS	A,B	1
210	BACR15BB4AD		..RIVET- (SIZE DETERMINE ON INST)	A,B	7
			-----*-----		
215	149T7210-31		..SEAL- (MFD FROM EXTR RUBBER F25.01 BAC1530-47 X 13.8 IN.)	A,B	1
220	149T7210-25		..RETAINER-SEAL ATTACHING PARTS	A,B	1
225	BACR15BB4AD		..RIVET- (SIZE DETERMINE ON INST)	A,B	10
			-----*-----		
230	149T7210-32		..SEAL- (MFD FROM EXTR RUBBER F25.01 BAC1530-47 X 15.5 IN.)	A,B	2

52-48-51

 ILLUSTRATED PARTS LIST
 01.1 Page 1017
 Mar 01/00

FIG. & ITEM	PART NO.	AIRLINE PART NUMBER	NOMENCLATURE 1234567	EFF CODE	QTY PER ASSY
01-235	149T7210-26		..RETAINER-SEAL ATTACHING PARTS	A,B	2
240	BACR15BB4AD		..RIVET- (SIZE DETERMINE ON INST) -----*-----	A,B	22
245	149T7210-33		..SEAL- (MFD FROM EXTR RUBBER F25.01 BAC1530-47 X 9.6 IN.)	A	1
250	149T7210-27		..RETAINER-SEAL ATTACHING PARTS	A	1
255	BACR15BB4AD		..RIVET- (SIZE DETERMINE ON INST) -----*-----	A	7
260	149T7210-34		..SEAL- (MFD FROM EXTR RUBBER F25.01 BAC1530-47 X 12.5 IN.)	B	1
265	149T7210-28		..RETAINER-SEAL ATTACHING PARTS	B	1
270	BACR15BB4AD		..RIVET- (SIZE DETERMINE ON INST) -----*-----	B	9
275	149T7210-35		..SEAL- (MFD FROM EXTR RUBBER F25.01 BAC1530-47 X 21.2 IN.)	B	1
280	149T7210-29		..RETAINER-SEAL ATTACHING PARTS	B	1
285	BACR15BB4AD		..RIVET- (SIZE DETERMINE ON INST) -----*-----	B	15

52-48-51

 ILLUSTRATED PARTS LIST
 01.1 Page 1018
 Mar 01/00


BOEING
 COMPONENT
 MAINTENANCE MANUAL

FIG. & ITEM	PART NO.	AIRLINE PART NUMBER	NOMENCLATURE 1234567	EFF CODE	QTY PER ASSY
01-					
290	149T7219-1		DELETED		
295	149T7219-2		DELETED		
			ATTACHING PARTS		
300	NAS6604-19		DELETED		
305	AN960PD416		DELETED		
310	NAS42DD8-32		DELETED		
315	BRH10C4D		DELETED		
320	N02		DELETED		
320A	2		DELETED		
325	HI2099		DELETED		
330	149T7219-5		DELETED		
335	BA3-2		DELETED		
340	66-8309-3		DELETED		
345	HL440UC5-13		DELETED		
350	HL70-5		DELETED		
355	149T7219-3		DELETED		
-360	149T7219-4		DELETED		
365	149T7216-1		DELETED		
-370	149T7216-2		DELETED		
375	BACB30LR3-23		DELETED		
380	BACW10UC10P		DELETED		
385	BRH10C3D		DELETED		
390	149T7220-1		DELETED		
395	BACB30LR3-23		DELETED		
400	BACW10UC10P		DELETED		
405	BCREF5029		DELETED		
410	BRH10C3D		DELETED		
415	10-61334-7		DELETED		
415A	9285-7		DELETED		

52-48-51

ILLUSTRATED PARTS LIST

01.1

Page 1019

Mar 01/00

FIG. & ITEM	PART NO.	AIRLINE PART NUMBER	NOMENCLATURE 1234567	EFF CODE	QTY PER ASSY
01-415B	H2911-1		..LATCH- (V83014) (SPEC 10-61334-7) (OPT 9285-7 (V84256))	A	13
420	10-61334-7		DELETED		
420A	9285-7		DELETED		
420B	H2911-1		..LATCH- (V83014) (SPEC 10-61334-7) (OPT 9285-7 (V84256))	B	12
425	BACB30LH2-7		DELETED		
425A	BACB30LH2-6		..BOLT	A	52
430	BACB30LH2-7		DELETED		
430A	BACB30LH2-6		..BOLT	B	48
435	BACW10UC8P		..WASHER	A	52
440	BACW10UC8P		..WASHER	B	48
445	AN960PD8L		..WASHER	A	52
450	AN960PD8L		..WASHER	B	48
455	BACN10JC08CD		..NUT	A	52
460	BACN10JC08CD		..NUT	B	48
465	BACB30LH3-7		DELETED		
465A	BACB30LH3-6		..BOLT	A	26
470	BACB30LH3-7		DELETED		
470A	BACB30LH3-6		..BOLT	B	24
475	BACW10UC10P		..WASHER	A	26
480	BACW10UC10P		..WASHER	B	24
485	AN960PD10L		..WASHER	A	26
490	AN960PD10L		..WASHER	B	24
495	BACN10JC3CD		..NUT	A	26
500	BACN10JC3CD		..NUT -----*-----	B	24
501	BACS40R008F035F		DELETED		
-502	149T7210-5011		.DOOR ASSY- (REPLD BY ITEM 502A)	A	1
-502A	149T7210-5013		.DOOR ASSY- (REPLS ITEM 502) (REPLD BY ITEM 10B)	A	1

52-48-51

 ILLUSTRATED PARTS LIST
 01.1 Page 1020
 Mar 01/00


BOEING
 COMPONENT
 MAINTENANCE MANUAL

FIG. & ITEM	PART NO.	AIRLINE PART NUMBER	NOMENCLATURE 1234567	EFF CODE	QTY PER ASSY
01- -504	149T7210-5012		.DOOR ASSY- (REPLD BY ITEM 504A)	B	1
-504A	149T7210-5014		.DOOR ASSY- (REPLS ITEM 504) (RPLD BY ITEM 15B)	B	1
505	149T7210-5		..BOND ASSY- (USED ON ITEM 502)	A	1
-505A	149T7210-47		..BOND ASSY- (USED ON ITEM 502A)	A	1
510	149T7210-6		..BOND ASSY- (USED ON ITEM 504)	B	1
-510A	149T7210-48		..BOND ASSY- (USED ON ITEM 504A)	B	1
515	149T7217-1		..FITTING ASSY- (USED ON ITEM 502A)	A	1
520	149T7217-2		..FITTING ASSY- (USED ON ITEM 504A)	B	1
525	BACB30LH3-25		..BOLT	A,B	4
530	BACW10UC10P		..WASHER	A,B	4
535	AN960PD10L		..WASHER	A,B	4
540	BACN10JC3CD		..NUT	A,B	4
			-----*-----		
545	149T7221-1		...BUSHING	A,B	1
550	BACB28AM06B013A		...BUSHING	A,B	1
555	149T7217-3		...FITTING	A	1
560	149T7217-4		...FITTING	B	1
565	149T7219-1		..ROD ASSY-DOOR OPEN SPRT (USED ON ITEM 502)	A	1
570	149T7219-2		..ROD ASSY-DOOR OPEN SPRT (USED ON ITEM 504)	B	1
			ATTACHING PARTS		
575	NAS6604-19		..BOLT	A,B	1
580	AN960PD416		..WASHER	A,B	2
585	NAS42DD8-32		..SPACER	A,B	2
590	BACN10JC43CD		..NUT	A,B	1
			-----*-----		
595	2		DELETED		
595A	N02		...PIN-COWL (V56110)	A,B	1

52-48-51

 ILLUSTRATED PARTS LIST
 01.1 Page 1021
 Mar 01/00

FIG. & ITEM	PART NO.	AIRLINE PART NUMBER	NOMENCLATURE 1234567	EFF CODE	QTY PER ASSY
01-600	HI2099		... TERMINAL- (V26590) (SPEC BACT14A4) (OPT HT100-4 (V83014)) (OPT ST2099 (V80523)) (OPT BM2488A4 (V22277)) (OPT 8-04057-4 (V11328))	A,B	1
605	149T7219-5		... CABLE	A,B	1
610	BA3-2		... TERMINAL- (V65196) (SPEC BACT14B2) (OPT HI2487-2 (V26590)) (OPT HT200-2 (V83014)) (OPT RA2487-2 (V80523)) (OPT BM2487-2 (V22277)) (OPT BM2487-2 (V22277))	A,B	1
615	66-8309-3		... END, ROD	A,B	1

52-48-51

 ILLUSTRATED PARTS LIST
 01.1 Page 1022
 Mar 01/00


BOEING
 COMPONENT
 MAINTENANCE MANUAL

FIG. & ITEM	PART NO.	AIRLINE PART NUMBER	NOMENCLATURE 1234567	EFF CODE	QTY PER ASSY
01-620	HL440UC5-13		...BOLT- (V56878) (SPEC BACB30FM5A13) (OPT HL440UC5-13 (V73197)) (OPT HL440UC5-13 (V92215)) (OPT HL440UC5-13 (V97928)) (OPT HL440UC5-13 (V80539)) (OPT WC130-5-13 (V60516)) (OPT 67067-5A13 (V56878)) (OPT HL440UC5-13 (V60516)) (OPT HL440UC5-13 (V97928)) (OPT HL440UC5-13 (V08524))	A,B	2
625	HL70-5		...COLLAR- (V56878) (SPEC BACC30M5) (OPT HL70-5 (V73197)) (OPT HL70-5 (V92215)) (OPT 66014-5 (V56878))	A,B	2
630	149T7219-3		...TUBE	A	1
-635	149T7219-4		...TUBE	B	1
640	BACB30LR3-23		..BOLT- (USED ON ITEMS 502, 504)	A,B	4
645	BACW10UC10P		..WASHER- (USED ON ITEMS 502, 504)	A,B	4

52-48-51

 ILLUSTRATED PARTS LIST
 01.1 Page 1023
 Mar 01/00

FIG. & ITEM	PART NO.	AIRLINE PART NUMBER	NOMENCLATURE 1234567	EFF CODE	QTY PER ASSY
01-650	BACN10JC3CD		..NUT- (USED ON ITEMS 502, 504)	A,B	4
655	149T7216-1		..FITTING- (USED ON ITEM 502)	A	1
-660	149T7216-2		..FITTING- (USED ON ITEM 504)	B	1
665	BACB30LR3-23		..BOLT- (USED ON ITEMS 502, 504)	A,B	2
670	BACW10UC10P		..WASHER- (USED ON ITEMS 502, 504)	A,B	2
675	BCREF5029		..FILLER- (V81205) (BACF33C111-075DE) (USED ON ITEMS 502, 504)	A,B	2
680	BACN10JC3CD		..NUT- (USED ON ITEMS 502, 504)	A,B	2
685	149T7220-1		..CATCH- (USED ON ITEMS 502, 504)	A,B	1
690	149T7210-65		DELETED		
695	149T7210-66		DELETED		
700	149T7217-1		DELETED		
705	149T7217-2		DELETED		
			ATTACHING PARTS		
710	BACB30LH3-25		DELETED		
715	BACW10UC10P		DELETED		
720	AN960PD10L		DELETED		
725	BACN10JC3CD		DELETED		
730	149T7221-1		DELETED		
735	BACB28AM06B013A		DELETED		
740	149T7217-3		DELETED		
745	149T7217-4		DELETED		

- Item Not Illustrated

52-48-51

ILLUSTRATED PARTS LIST
 01.1 Page 1024
 Mar 01/00


BOEING
 COMPONENT
 MAINTENANCE MANUAL

FIG. & ITEM	PART NO.	AIRLINE PART NUMBER	NOMENCLATURE 1234567	EFF CODE	QTY PER ASSY
02-					
-1	149T7210-5011		DELETED		
-1A	149T7210-5013		DELETED		
-5	149T7210-5012		DELETED		
-5A	149T7210-5014		DELETED		
10	149T7212-1		DELETED		
15	149T7212-2		DELETED		
20	149T7212-3		DELETED		
25	149T7212-3		DELETED		
35	BACB30LR3-8		DELETED		
40	BACB30LR3-8		DELETED		
45	BACB30LH3-25		DELETED		
50	BACB30LH3-25		DELETED		
55	BACB30LH3-25		DELETED		
60	BACB30LH3-25		DELETED		
65	BACW10UC10P		DELETED		
65A	BACW10UC10P		DELETED		
70	BACW10UC10P		DELETED		
70A	BACW10UC10P		DELETED		
75	AN960PD10		DELETED		
75A	AN960PD10		DELETED		
80	AN960PD10		DELETED		
80A	AN960PD10		DELETED		
85	BRH10C3MD		DELETED		
85A	BRH10C3MD		DELETED		
90	BRH10C3MD		DELETED		
90A	BRH10C3MD		DELETED		
95	BACB28Y3M044		DELETED		
100	BACB28Y3M044		DELETED		
105	BACB28Y3M059		DELETED		
110	BACB28Y3M059		DELETED		

52-48-51

 ILLUSTRATED PARTS LIST
 01.1 Page 1025
 Mar 01/00

FIG. & ITEM	PART NO.	AIRLINE PART NUMBER	NOMENCLATURE 1234567	EFF CODE	QTY PER ASSY
02-					
115	149T7212-7		DELETED		
120	149T7212-8		DELETED		
125	149T7212-9		DELETED		
130	149T7212-9		DELETED		
135	740A21-8		DELETED		
140	740A21-8		DELETED		
145	BACB30LH3-3		DELETED		
150	BACB30LH3-3		DELETED		
160	AN960-10L		DELETED		
165	AN960-10L		DELETED		
170	AN960D10L		DELETED		
175	AN960D10L		DELETED		
180	BACW10UC10P		DELETED		
185	BACW10UC10P		DELETED		
190	BRH10C3MD		DELETED		
195	BRH10C3MD		DELETED		
200	149T7210-30		DELETED		
205	149T7210-24		DELETED		
210	BACR15BB4AD		DELETED		
215	149T7210-31		DELETED		
220	149T7210-25		DELETED		
225	BACR15BB4AD		DELETED		
230	149T7210-32		DELETED		
235	149T7210-26		DELETED		
240	BACR15BB4AD		DELETED		
245	149T7210-33		DELETED		
250	149T7210-27		DELETED		
255	BACR15BB4AD		DELETED		
260	149T7210-34		DELETED		
265	149T7210-28		DELETED		
270	BACR15BB4AD		DELETED		
275	149T7210-35		DELETED		
280	149T7210-29		DELETED		
285	BACR15BB4AD		DELETED		
290	149T7219-1		DELETED		
295	149T7219-2		DELETED		
300	NAS6604-19		DELETED		
305	AN960PD416		DELETED		
310	NAS42DD8-32		DELETED		
315	BRH10C4MD		DELETED		

52-48-51

 ILLUSTRATED PARTS LIST
 01.1 Page 1026
 Mar 01/00

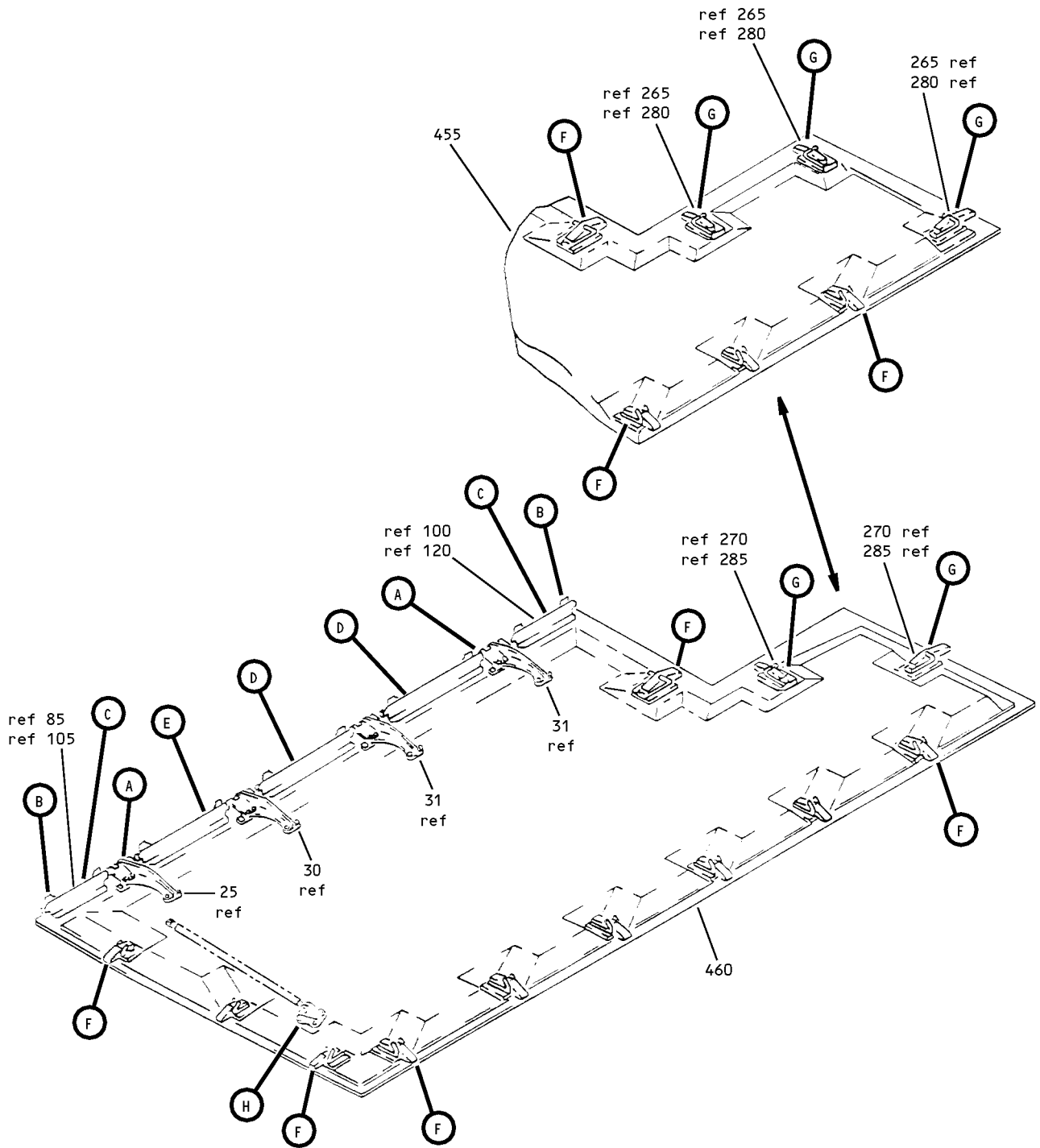

BOEING
 COMPONENT
 MAINTENANCE MANUAL

FIG. & ITEM	PART NO.	AIRLINE PART NUMBER	NOMENCLATURE 1234567	EFF CODE	QTY PER ASSY
02-					
320	N02		DELETED		
325	BA3-2		DELETED		
330	149T7219-5		DELETED		
335	HI2099		DELETED		
340	66-8309-3		DELETED		
345	HL440UC5-13		DELETED		
350	HL70-5		DELETED		
355	149T7219-3		DELETED		
-360	149T7219-4		DELETED		
365	149T7216-1		DELETED		
-370	149T7216-2		DELETED		
375	BACB30LR3-23		DELETED		
380	BACW10UC10P		DELETED		
385	BRH10C3MD		DELETED		
390	149T7220-1		DELETED		
395	BACB30LR3-23		DELETED		
400	BACW10UC10P		DELETED		
405	BCREF5029		DELETED		
410	BACN10JC3D		DELETED		
415	10-61334-7		DELETED		
420	10-61334-7		DELETED		
425	BACB30LH2-7		DELETED		
430	BACB30LH2-7		DELETED		
435	BACW10UC8P		DELETED		
440	BACW10UC8P		DELETED		
445	AN960PD8L		DELETED		
450	AN960PD8L		DELETED		
455	BRH10C08MD		DELETED		
460	BRH10C08MD		DELETED		
465	BACB30LH3-7		DELETED		
470	BACB30LH3-7		DELETED		
475	BACW10UC10P		DELETED		
480	BACW10UC10P		DELETED		
485	AN960PD10L		DELETED		
490	AN960PD10L		DELETED		
495	BRH10C3MD		DELETED		
500	BRH10C3MD		DELETED		
-505	149T7210-5		DELETED		
505A	149T7210-47		DELETED		
-510	149T7210-6		DELETED		
510A	149T7210-48		DELETED		

- Item Not Illustrated

52-48-51

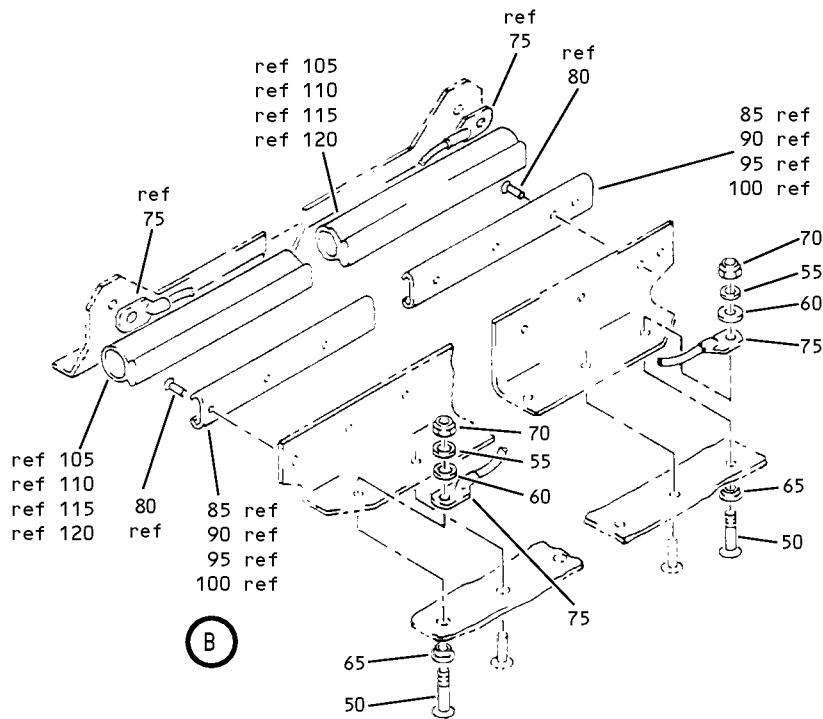
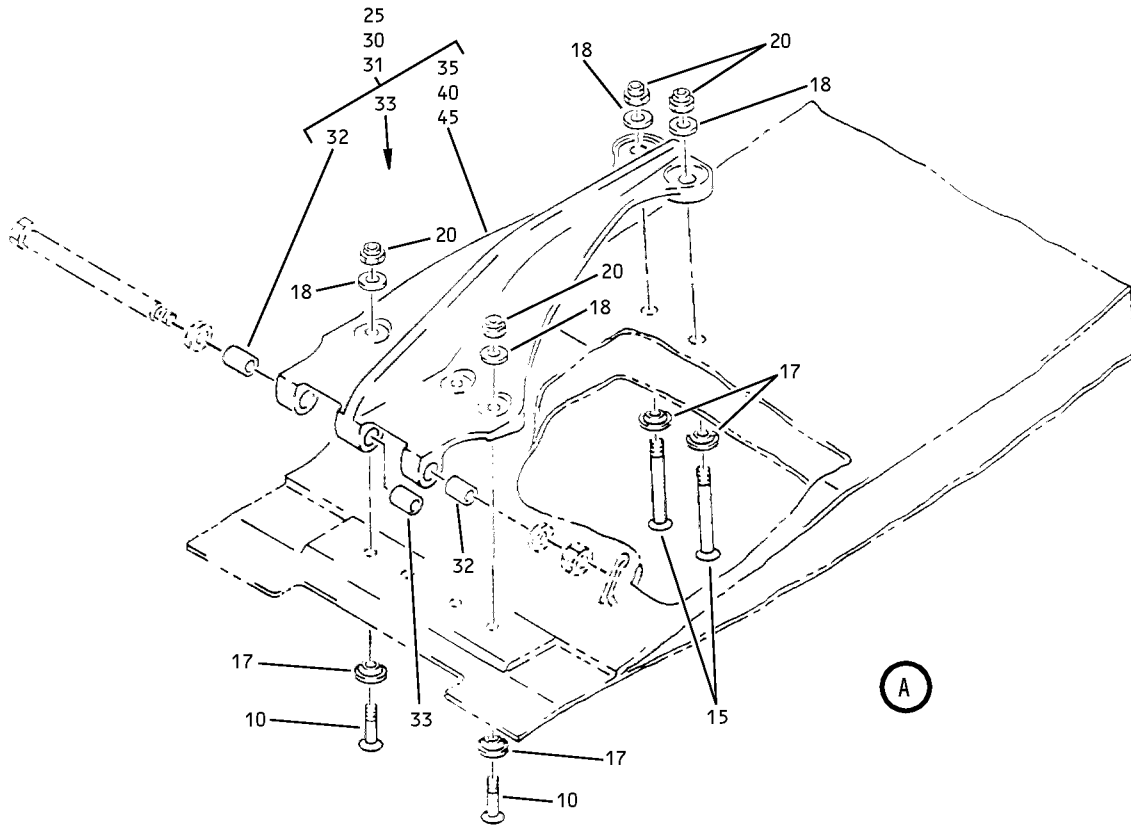
 ILLUSTRATED PARTS LIST
 01.1 Page 1027
 Mar 01/00



Underwing Fairing ECS Door Assembly
 Figure 3 (Sheet 1)

52-48-51

ILLUSTRATED PARTS LIST
 01.1 Page 1028
 Mar 01/00



Underwing Fairing ECS Door Assembly
 Figure 3 (Sheet 2)

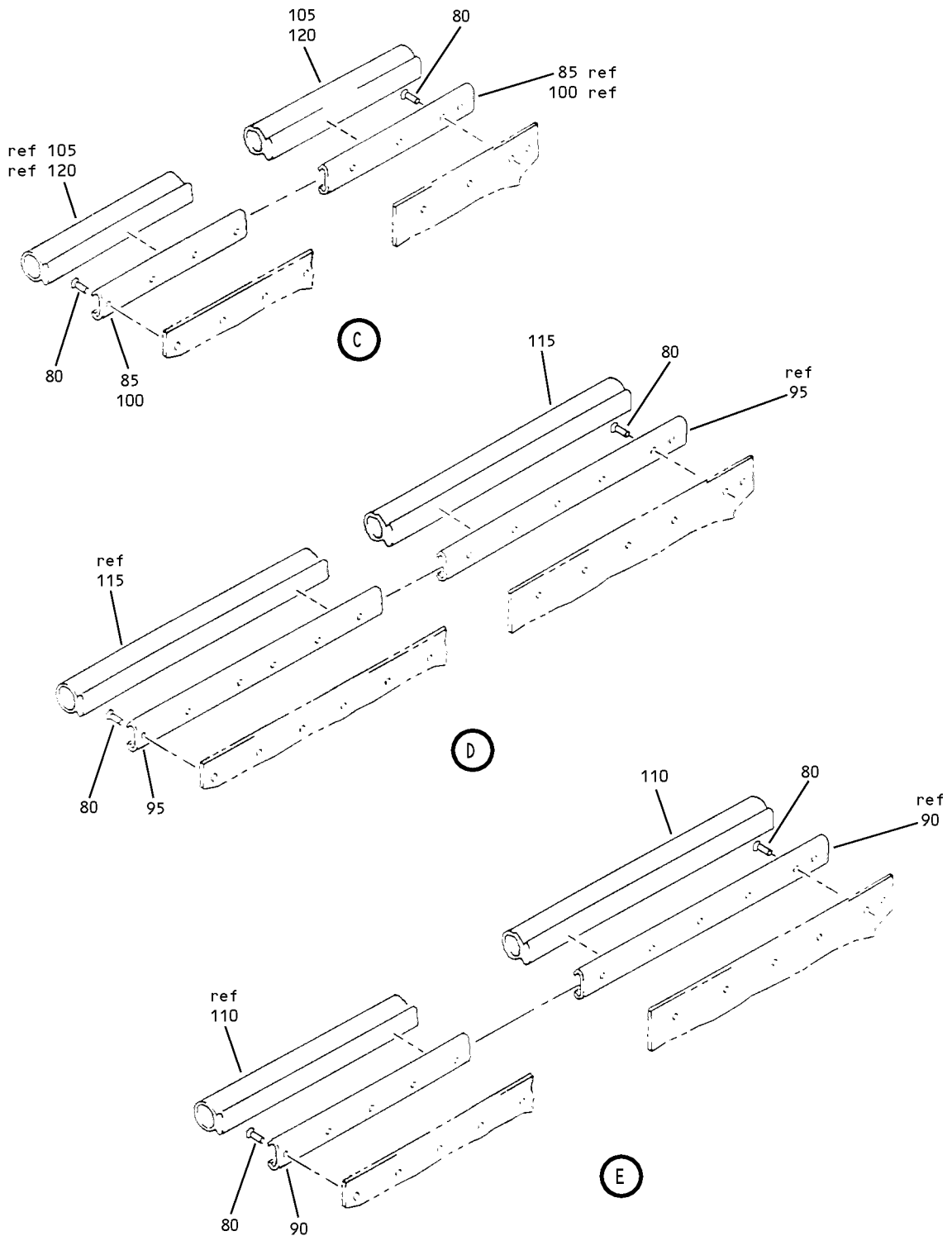
52-48-51

ILLUSTRATED PARTS LIST

01.1

Page 1029

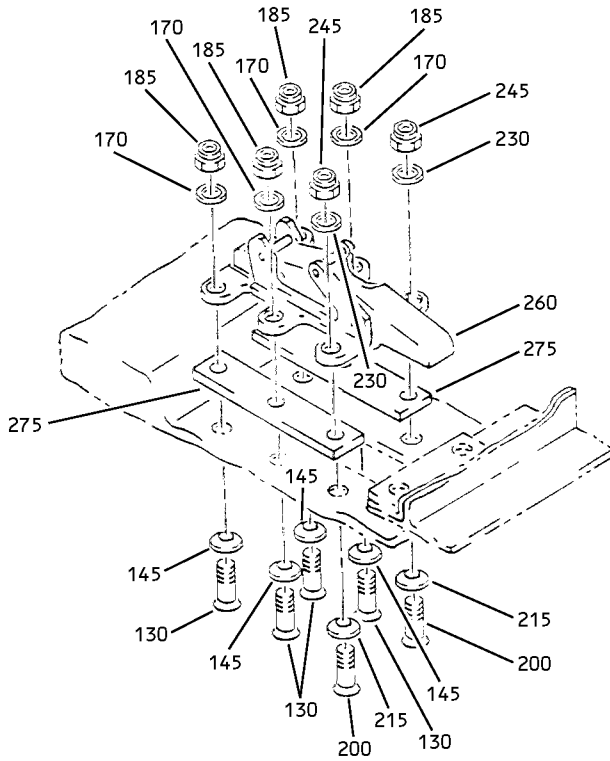
Mar 01/00



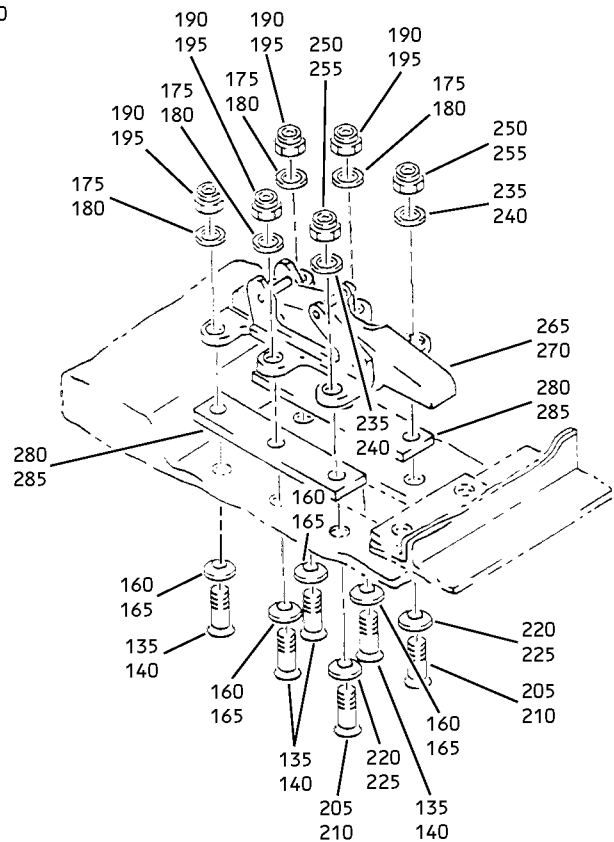
Underwing Fairing ECS Door Assembly
 Figure 3 (Sheet 3)

52-48-51

ILLUSTRATED PARTS LIST
 01.1 Page 1030
 Mar 01/00



F

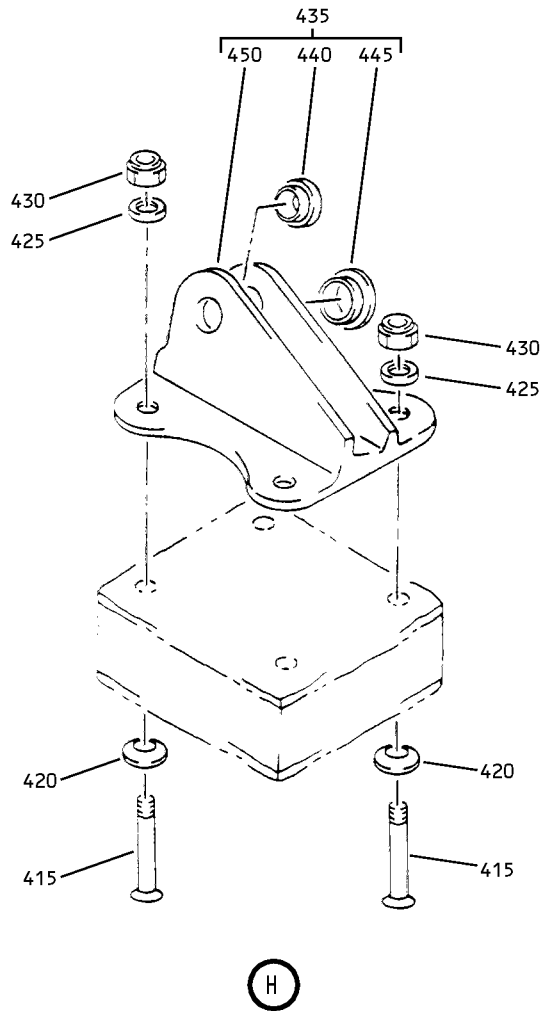


G

Underwing Fairing ECS Door Assembly
 Figure 3 (Sheet 4)

52-48-51

ILLUSTRATED PARTS LIST
 01.1 Page 1031
 Mar 01/00



Underwing Fairing ECS Door Assembly
Figure 3 (Sheet 5)

52-48-51

ILLUSTRATED PARTS LIST
01.1 Page 1032
Mar 01/00


BOEING
 COMPONENT
 MAINTENANCE MANUAL

FIG. & ITEM	PART NO.	AIRLINE PART NUMBER	NOMENCLATURE 1234567	EFF CODE	QTY PER ASSY
03- -1A	149T7210-63		DOOR ASSY-UNDERWING FAIRING ENVIRONMENTAL CONT SYS (LH)	C	RF
-1B	149T7210-69		DOOR ASSY-UNDERWING FAIRING ENVIRONMENTAL CONT SYS (LH)	E	RF
-5	149T7210-70		DOOR ASSY-UNDERWING FAIRING ENVIRONMENTAL CONT SYS (RH)	F	RF
10	BACB30LR3-8		.BOLT	C	16
-10A	BACB30LH3-8		.BOLT	E,F	16
15	BACB30LH3-25		.BOLT	C,E,F	8
17	BACW10UC10P		.WASHER	C,E,F	24
18	AN960PD10		.WASHER	C	24
-18A	NAS1149D0363J		.WASHER	E,F	24
20	BACN10JC3CD		.NUT	C,E,F	24
25	149T7212-1		.HINGE ASSY-SIDE	C,E,F	1
30	149T7212-2		.HINGE ASSY-SIDE	C,E,F	1
31	149T7212-3		.HINGE ASSY-SIDE	C,E,F	2
32	BACB28Y3M044		..BUSHING	C,E,F	2
33	BACB28Y3M059		..BUSHING	C,E,F	1
35	149T7212-7		..HINGE- (USED ON ITEM 25)	C,E,F	1
40	149T7212-8		..HINGE- (USED ON ITEM 30)	C,E,F	1
45	149T7212-9		..HINGE- (USED ON ITEM 31)	C,E,F	1
50	BACB30LH3-3		.BOLT	C,E,F	10
55	AN960-10L		.WASHER	C	10
-55A	NAS1149D0316H		.WASHER	E,F	10
60	AN960D10L		.WASHER	C	10
-60A	NAS1149F0332P		.WASHER	E,F	10

52-48-51

 ILLUSTRATED PARTS LIST
 01.1 Page 1033
 Mar 01/00

FIG. & ITEM	PART NO.	AIRLINE PART NUMBER	NOMENCLATURE 1234567	EFF CODE	QTY PER ASSY
03-					
65	BACW10UC10P		.WASHER	C,E,F	10
70	BACN10JC3CD		.NUT	C,E,F	10
75	BACJ40A20-8		.JUMPER ASSY	C,E,F	10
80	BACR15BB4AD		.RIVET- (SIZE DETERMINE ON INST)	C,E,F	46
85	149T7210-24		.RETAINER-SEAL	C,E,F	1
90	149T7210-25		.RETAINER-SEAL	C,E,F	1
95	149T7210-26		.RETAINER-SEAL	C,E,F	2
100	149T7210-27		.RETAINER-SEAL	C,E,F	1
105	149T7210-30		.SEAL- (MFD FROM EXTR RUBBER F25.01 BAC1530-47 X 9.4 IN.)	C,E,F	1
110	149T7210-31		.SEAL- (MFD FROM EXTR RUBBER F25.01 BAC1530-47 X 13.8 IN.)	C,E,F	1
115	149T7210-32		.SEAL- (MFD FROM EXTR RUBBER F25.01 BAC1530-47 X 15.5 IN.)	C,E,F	2
120	149T7210-33		.SEAL- (MFD FROM EXTR RUBBER F25.01 BAC1530-47 X 9.6 IN.)	C,E,F	1
130	BACB30LH2-6		.BOLT	C,E,F	40
135	BACB30LH2-6		.BOLT	C	12
140	BACB30LH2-6		.BOLT	E,F	8
145	BACW10UC8P		.WASHER	C,E,F	40
160	BACW10UC8P		.WASHER	C	12
165	BACW10UC8P		.WASHER	E,F	8

52-48-51

 ILLUSTRATED PARTS LIST
 01.1 Page 1034
 Mar 01/00


BOEING
 COMPONENT
 MAINTENANCE MANUAL

FIG. & ITEM	PART NO.	AIRLINE PART NUMBER	NOMENCLATURE 1234567	EFF CODE	QTY PER ASSY
03-					
170	AN960PD8L		.WASHER	C	40
-170A	NAS1149DN816J		.WASHER	E,F	40
175	AN960PD8L		.WASHER	C	12
180	NAS1149DN816J		.WASHER	E,F	8
185	BACN10JC08CD		.NUT	C,E,F	40
190	BACN10JC08CD		.NUT	C	12
195	BACN10JC08CD		.NUT	E,F	8
200	BACB30LH3-6		.BOLT	C,E,F	20
205	BACB30LH3-6		.BOLT	C	6
210	BACB30LH3-6		.BOLT	E,F	4
215	BACW10UC10P		.WASHER	C,E,F	20
220	BACW10UC10P		.WASHER	C	6
225	BACW10UC10P		.WASHER	E,F	4
230	AN960PD10L		.WASHER	C	20
-230A	NAS1149D0316J		.WASHER	E,F	20
235	AN960PD10L		.WASHER	C	6
240	NAS1149D0316J		.WASHER	E,F	4
245	BACN10JC3CD		.NUT	C,E,F	20
250	BACN10JC3CD		.NUT	C	6
255	BACN10JC3CD		.NUT	E,F	4
260	H2911-1		.LATCH- (V83014) (SPEC 10-61334-7) (OPT 9285-7 (V84256))	C,E,F	10
265	H2911-1		.LATCH- (V83014) (SPEC 10-61334-7) (OPT 9285-7 (V84256))	C	3
270	H2911-1		.LATCH- (V83014) (SPEC 10-61334-7) (OPT 9285-7 (V84256))	E,F	2
275	BACS40R008F035F		.SHIM	C,E,F	AR
280	BACS40R008F035F		.SHIM	C	AR
285	BACS40R008F035F		.SHIM	E,F	AR
415	BACB30LH3-25		.BOLT	C,E,F	4
420	BACW10UC10P		.WASHER	C,E,F	4

52-48-51

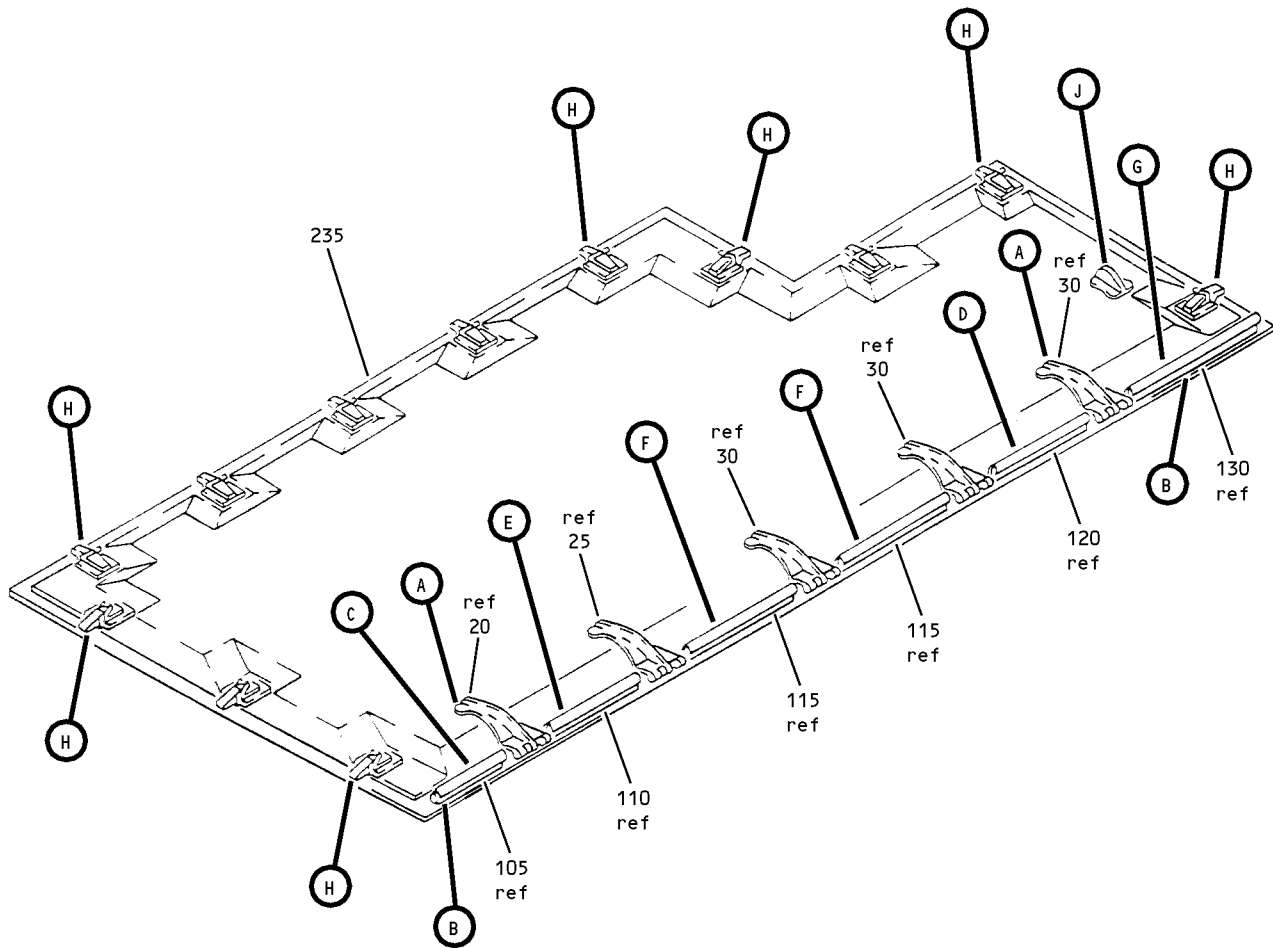
 ILLUSTRATED PARTS LIST
 01.1 Page 1035
 Mar 01/00

FIG. & ITEM	PART NO.	AIRLINE PART NUMBER	NOMENCLATURE 1234567	EFF CODE	QTY PER ASSY
03-					
425	AN960PD10L		.WASHER	C	4
-425A	NAS1149D0316J		.WASHER	E,F	4
430	BACN10JC3CD		.NUT	C,E,F	4
435	149T7217-1		.FITTING ASSY-STRUT ATTACH	C,E,F	1
440	149T7221-1		..BUSHING	C,E,F	1
445	BACB28AM06B013A		..BUSHING	C,E,F	1
450	149T7217-3		..FITTING	C,E,F	1
455	149T7210-65		.BOND ASSY	C	1
-455A	149T7210-71		DELETED		
-460	149T7210-72		DELETED		
465	149T7210-71		.BOND ASSY	E	1
-470	149T7210-72		.BOND ASSY	F	1

- Item Not Illustrated

52-48-51

ILLUSTRATED PARTS LIST
 01.1 Page 1036
 Mar 01/00

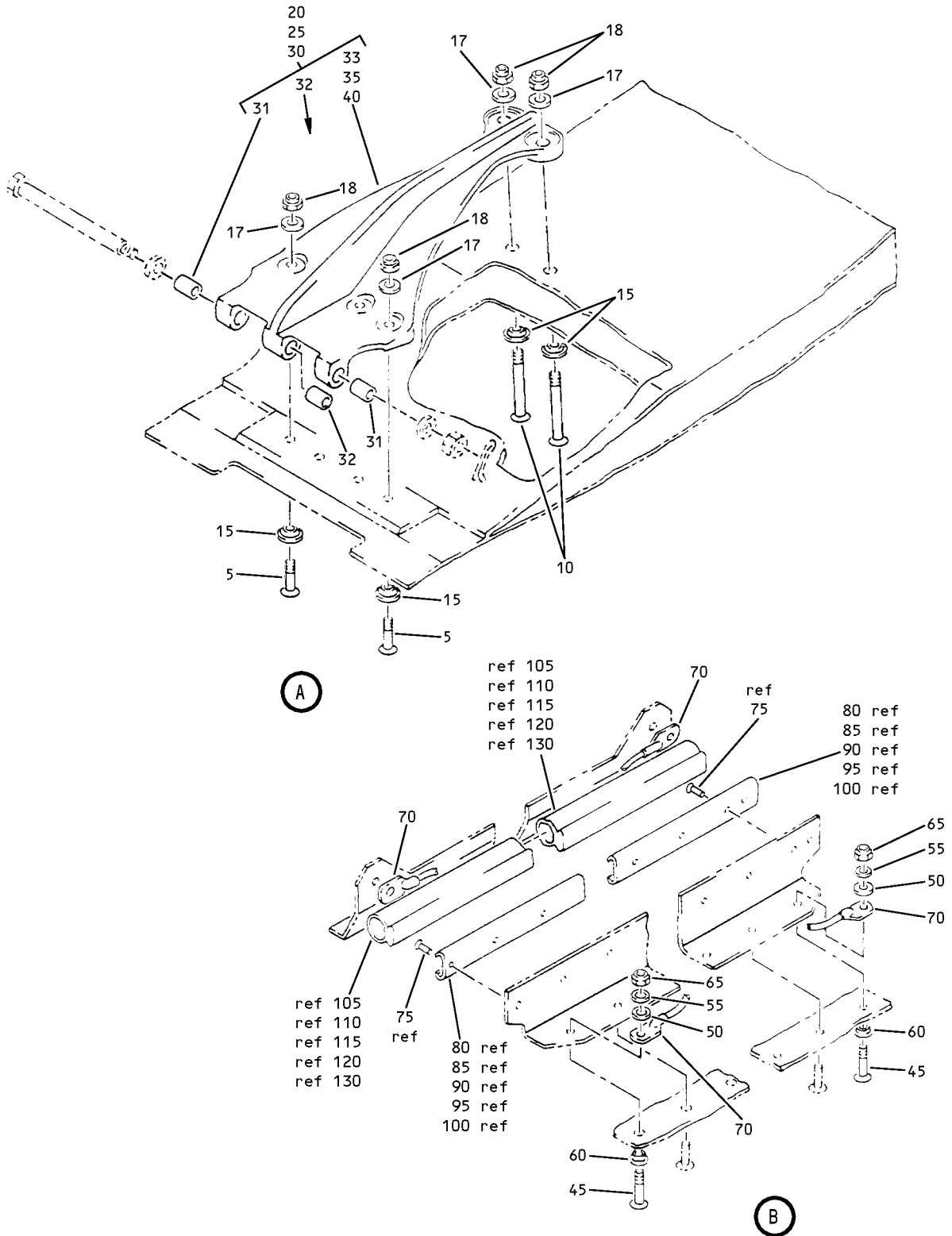


Underwing Fairing ECS Door Assembly
 Figure 4 (Sheet 1)

52-48-51

ILLUSTRATED PARTS LIST
 01.1 Page 1038
 Mar 01/00

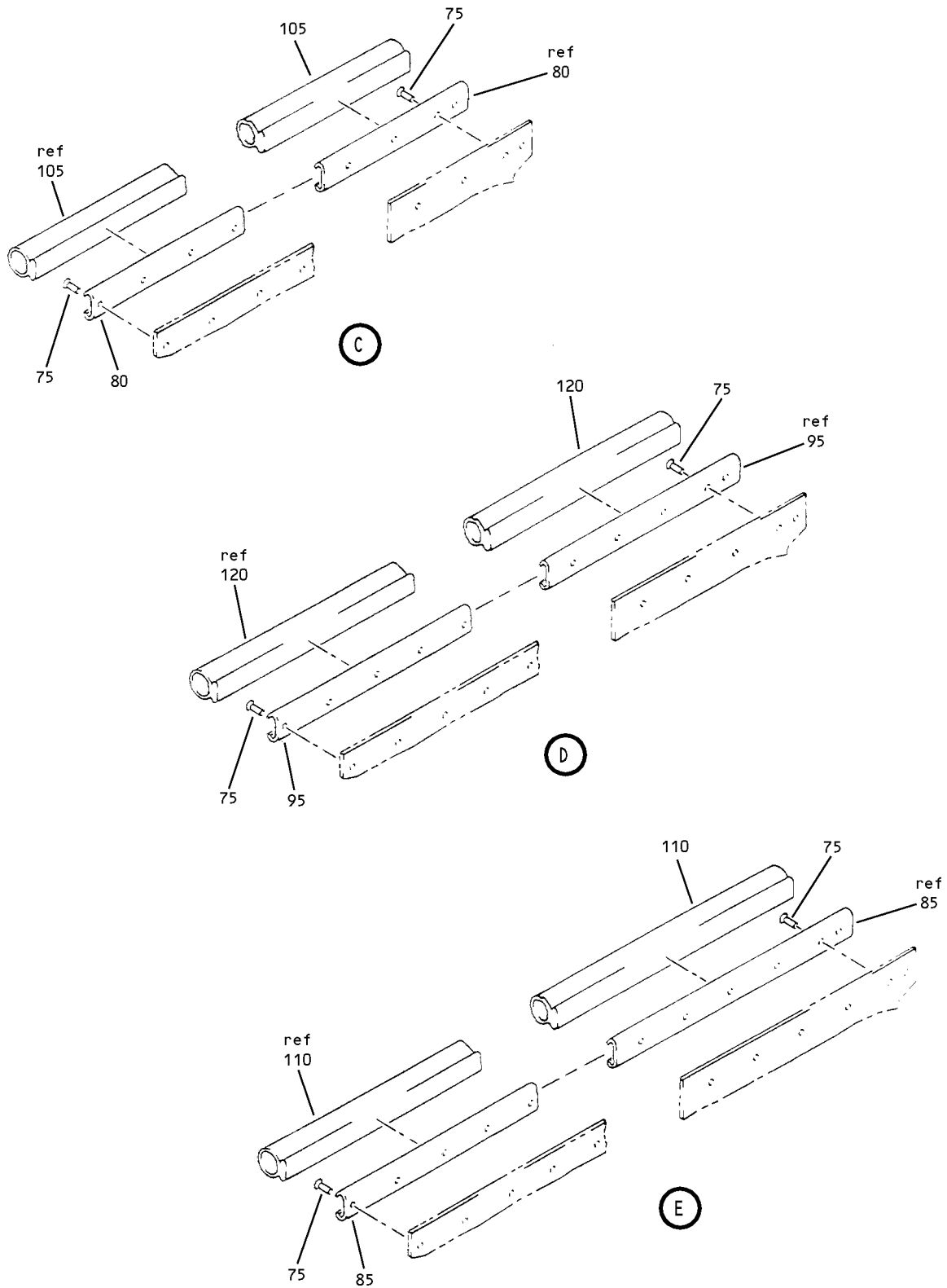
L04817



Underwing Fairing ECS Door Assembly
 Figure 4 (Sheet 2)

52-48-51

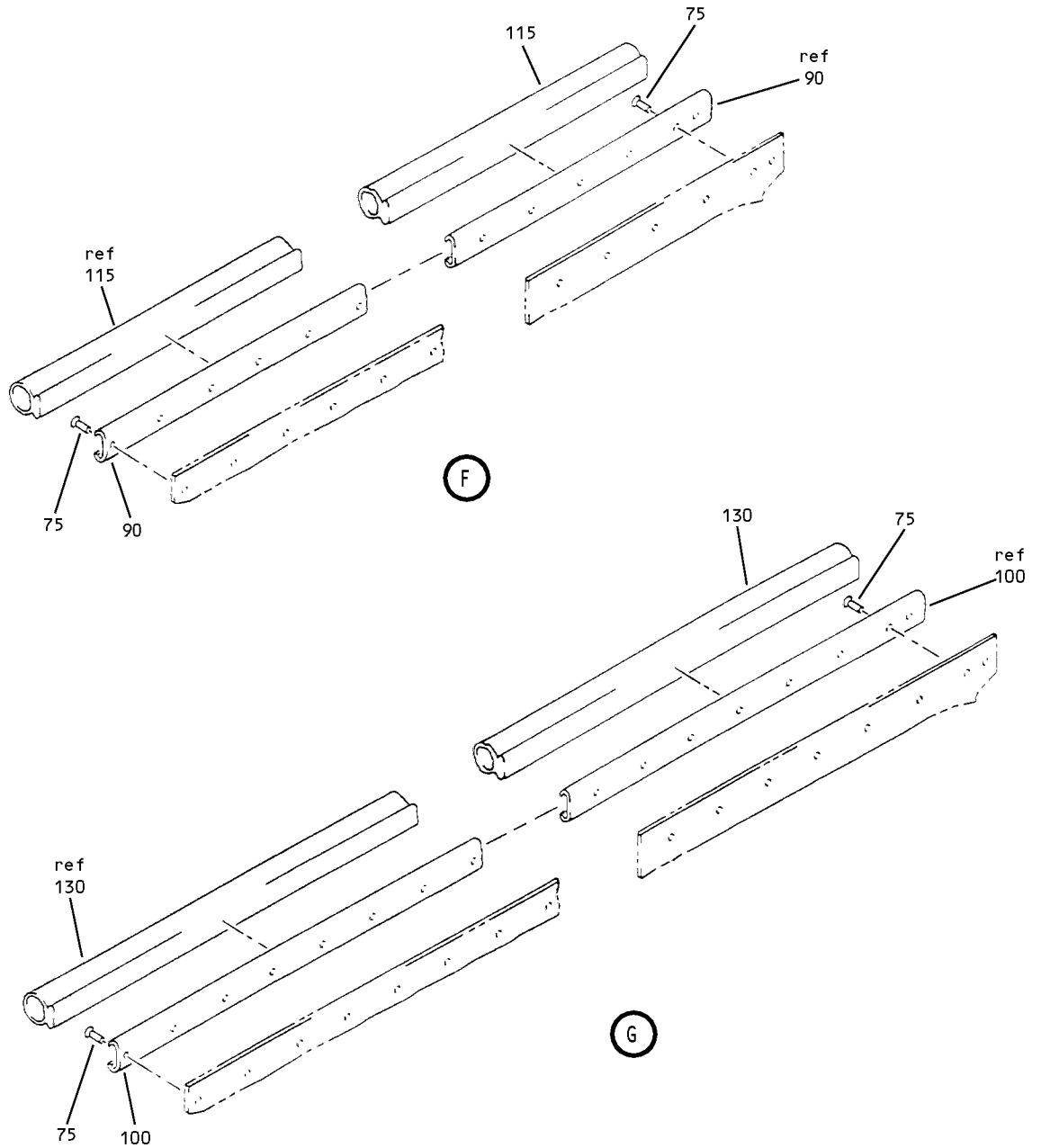
ILLUSTRATED PARTS LIST
 01.1 Page 1039
 Mar 01/00



Underwing Fairing ECS Door Assembly
Figure 4 (Sheet 3)

52-48-51

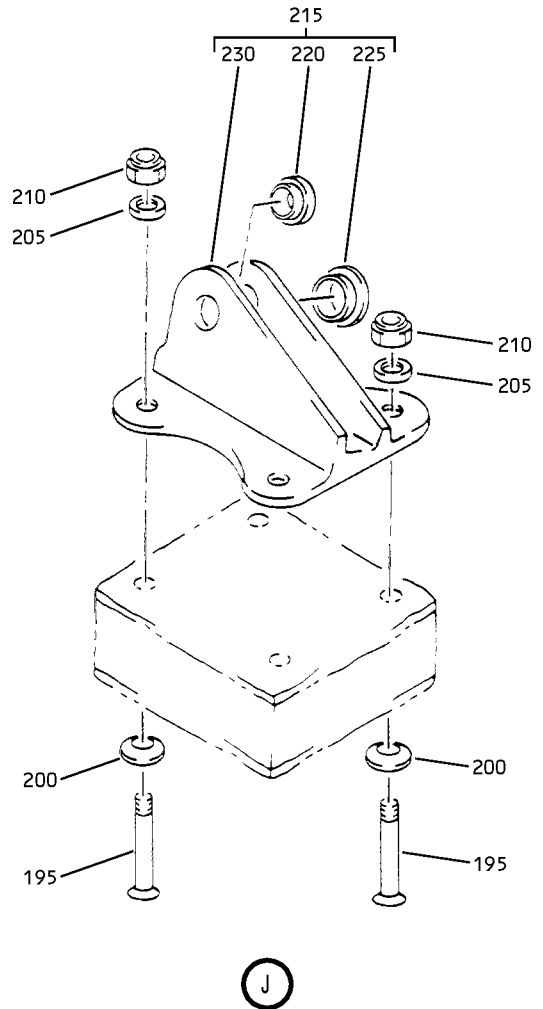
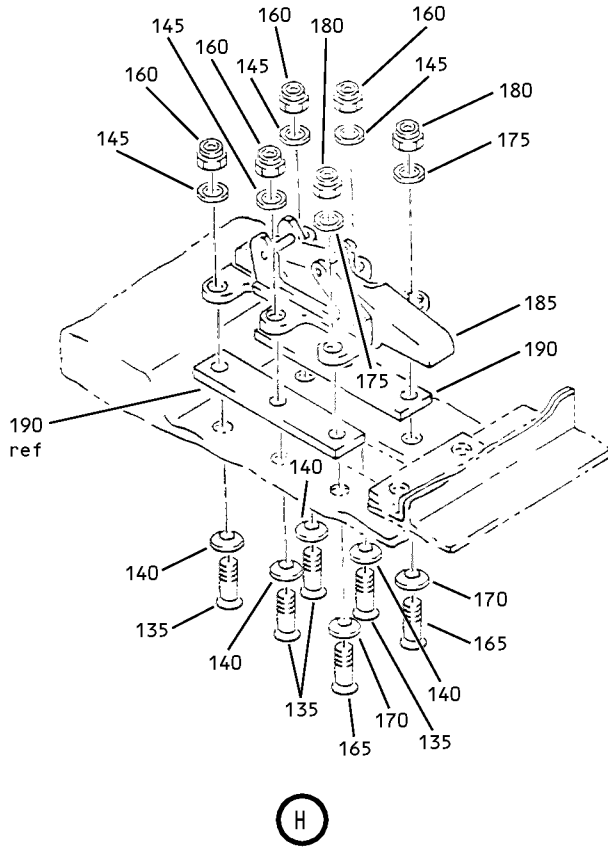
ILLUSTRATED PARTS LIST
01.1 Page 1040
Mar 01/00



Underwing Fairing ECS Door Assembly
Figure 4 (Sheet 4)

52-48-51

ILLUSTRATED PARTS LIST
01.1 Page 1041
Mar 01/00



Underwing Fairing ECS Door Assembly
 Figure 4 (Sheet 5)

52-48-51

ILLUSTRATED PARTS LIST
 01.1 Page 1042
 Mar 01/00


BOEING
 COMPONENT
 MAINTENANCE MANUAL

FIG. & ITEM	PART NO.	AIRLINE PART NUMBER	NOMENCLATURE 1234567	EFF CODE	QTY PER ASSY
04- -1A	149T7210-64		DOOR ASSY-UNDERWING FAIRING ENVIRONMENTAL CONT SYS (RH)	D	RF
5	BACB30LR3-8		.BOLT	D	20
10	BACB30LH3-25		.BOLT	D	10
15	BACW10UC10P		.WASHER	D	30
17	AN960PD10		.WASHER	D	30
18	BACN10JC3CD		.NUT	D	30
20	149T7212-1		.HINGE ASSY-SIDE	D	1
25	149T7212-2		.HINGE ASSY-SIDE	D	1
30	149T7212-3		.HINGE ASSY-SIDE	D	3
31	BACB28Y3M044		..BUSHING	D	2
32	BACB28Y3M059		..BUSHING	D	1
33	149T7212-7		..HINGE- (USED ON ITEM 20)	D	1
35	149T7212-8		..HINGE- (USED ON ITEM 25)	D	1
40	149T7212-9		..HINGE- (USED ON ITEM 30)	D	1
45	BACB30LH3-3		.BOLT	D	12
50	AN960-10L		.WASHER	D	12
55	AN960D10L		.WASHER	D	12
60	BACW10UC10P		.WASHER	D	12
65	BACN10JC3CD		.NUT	D	12
70	BACJ40A20-8		.JUMPER ASSY	D	12
75	BACR15BB4AD		.RIVET- (SIZE DETERMINE ON INST)	D	63
80	149T7210-24		.RETAINER-SEAL	D	1
85	149T7210-25		.RETAINER-SEAL	D	1
90	149T7210-26		.RETAINER-SEAL	D	2
95	149T7210-28		.RETAINER-SEAL	D	1
100	149T7210-29		.RETAINER-SEAL	D	1
105	149T7210-30		.SEAL- (MFD FROM EXTR RUBBER F25.01 BAC1530-47 X 9.4 IN.)	D	1

52-48-51

ILLUSTRATED PARTS LIST

01.1

Page 1043

Mar 01/00

FIG. & ITEM	PART NO.	AIRLINE PART NUMBER	NOMENCLATURE 1234567	EFF CODE	QTY PER ASSY
04-110	149T7210-31		.SEAL- (MFD FROM EXTR RUBBER F25.01 BAC1530-47 X 13.8 IN.)	D	1
115	149T7210-32		.SEAL- (MFD FROM EXTR RUBBER F25.01 BAC1530-47 X 15.5 IN.)	D	2
120	149T7210-34		.SEAL- (MFD FROM EXTR RUBBER F25.01 BAC1530-47 X 12.5 IN.)	D	1
130	149T7210-35		.SEAL- (MFD FROM EXTR RUBBER F25.01 BAC1530-47 X 21.2 IN.)	D	1
135	BACB30LH2-6		.BOLT	D	48
140	BACW10UC8P		.WASHER	D	48
145	AN960PD8L		.WASHER	D	48
160	BACN10JC08CD		.NUT	D	48
165	BACB30LH3-6		.BOLT	D	24
170	BACW10UC10P		.WASHER	D	24
175	AN960PD10L		.WASHER	D	24
180	BACN10JC3CD		.NUT	D	24
185	H2911-1		.LATCH- (V83014) (SPEC 10-61334-7) (OPT 9285-7 (V84256))	D	12
190	BACS40R008F035F		.SHIM	D	AR
195	BACB30LH3-25		.BOLT	D	4
200	BACW10UC10P		.WASHER	D	4
205	AN960PD10L		.WASHER	D	4
210	BACN10JC3CD		.NUT	D	4
215	149T7217-2		.FITTING ASSY-STRUT ATTACH	D	1
220	149T7221-1		..BUSHING	D	1
225	BACB28AM06B013A		..BUSHING	D	1
230	149T7217-4		..FITTING	D	1
235	149T7210-66		.BOND ASSY	D	1

- Item Not Illustrated

52-48-51

ILLUSTRATED PARTS LIST

01.1 Page 1044

Mar 01/00